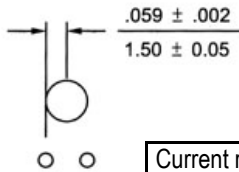
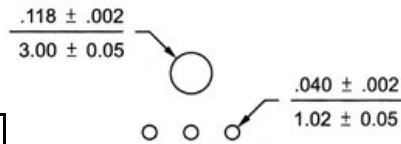


**SPECIFICATIONS**  
 Voltage rating: 250VAC  
 Current rating: See chart  
 Contact material: Brass pins  
 Contact plating: Tin  
 Contact resistance: 10 milliohms max.  
 Body material: Nylon, UL94V-0, black  
 Insulation resistance: 100 megohms min.  
 Withstanding: 1,500 VAC for 1 min.  
 Pin dimensions: .025" (0.64mm) square  
 Temperature rise: 30°C max.

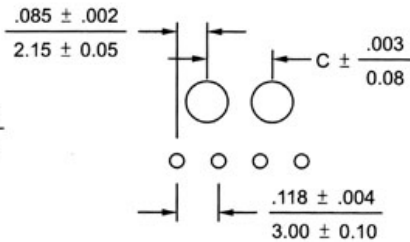
**2 circuit**



**3 circuit**



**4 ~ 12 circuit**



PC Board Layout

Current rating	
AWG	Amps
20	5
22	5
24	4
26	3
28	2
30	1

Surface Mount Available

Dimensional Information - in. (mm)			
Pos.	Dim. A	Dim. B	Dim. C
2	0.118 ( 3.0)	0.354 ( 9.0)	
3	0.236 ( 6.0)	0.472 (12.0)	
4	0.354 ( 9.0)	0.591 (15.0)	0.185 ( 4.7)
5	0.472 (12.0)	0.709 (18.0)	0.303 ( 7.7)
6	0.591 (15.0)	0.827 (21.0)	0.421 (10.7)
7	0.709 (18.0)	0.945 (24.0)	0.539 (13.7)
8	0.827 (21.0)	1.063 (27.0)	0.657 (16.7)
9	0.945 (24.0)	1.181 (30.0)	0.776 (19.7)
10	1.063 (27.0)	1.299 (33.0)	0.894 (22.7)
11	1.181 (30.0)	1.417 (36.0)	1.012 (25.7)
12	1.299 (33.0)	1.535 (39.0)	1.130 (28.7)

Series	Type	Positions	Options	Plating
JS-A	3046	XXS	XXX	XX
Pluggable connector	3046 series .118" (3.0mm) wire-to-board header	XX:02-12	Blank= Centering Pin (std) BL2=2mm Board Lock BL3=3mm Board Lock	Blank=Tin (std) GD=Gold

RoHS compliant

Rev.	Description	Date	Approved	Drawing	Name	Date
A	DIM	05/28/10	Tom	Approved	Howard	08/10/99
				Checked	Lizzy	08/10/99
				Drawn	Tina	08/10/99
				0.0 ± 0.35	0.00 ± 0.20	Angles ± 3'
				UNIT: mm		

**Central Components Manufacturing**  
 440 Lincoln Blvd., Middlesex, New Jersey 08846  
 Phone 732 469-5720 888 288-5152 Fax 732 469-1919

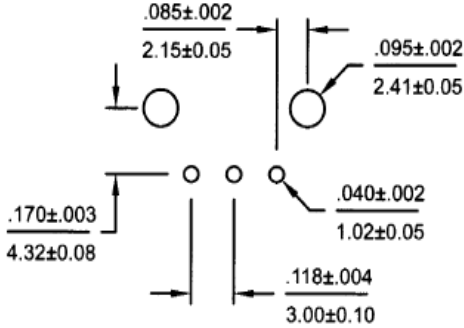
Part No.: **JS-A-3046-XXS-XXX-XX**

Description: Header, .118" (3.0mm) pitch, single row, wire-to-board, right angle

**SPECIFICATIONS**

Voltage rating: 250VAC  
 Current rating: See chart  
 Contact material: Brass pins  
 Contact plating: Tin  
 Contact resistance: 10 milliohms max.  
 Body material: Nylon, UL94V-0, black  
 Insulation resistance: 100 megohms min.  
 Withstanding: 1,500 VAC for 1 min.  
 Pin dimensions: .025" (0.64mm) square  
 Temperature rise: 30°C max.

Dimensional Information - in. (mm)			
Pos.	Dim. A	Dim. B	Dim. C
2	0.118 ( 3.0)	0.354 ( 9.0)	
3	0.236 ( 6.0)	0.472 (12.0)	
4	0.354 ( 9.0)	0.591 (15.0)	0.185 ( 4.7)
5	0.472 (12.0)	0.709 (18.0)	0.303 ( 7.7)
6	0.591 (15.0)	0.827 (21.0)	0.421 (10.7)
7	0.709 (18.0)	0.945 (24.0)	0.539 (13.7)
8	0.827 (21.0)	1.063 (27.0)	0.657 (16.7)
9	0.945 (24.0)	1.181 (30.0)	0.776 (19.7)
10	1.063 (27.0)	1.299 (33.0)	0.894 (22.7)
11	1.181 (30.0)	1.417 (36.0)	1.012 (25.7)
12	1.299 (33.0)	1.535 (39.0)	1.130 (28.7)

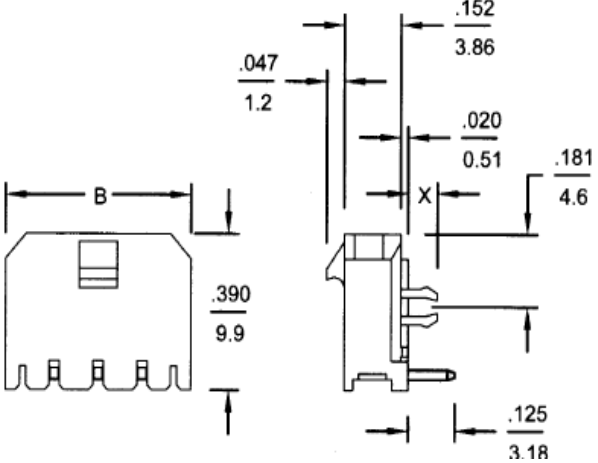
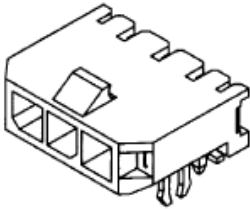
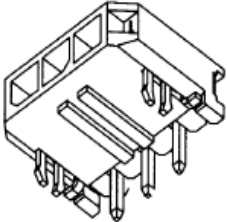
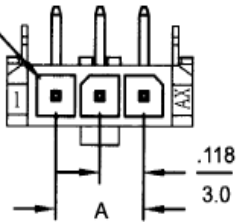


**PCB Layout**

Current rating	
AWG	Amps
20	5
22	5
24	4
26	3
28	2
30	1

Series	Type	Positions	Options	Plating
JS-A	3046	XXS	XXX	XX
Pluggable connector	3046 series .118" (3.0mm) wire-to-board header	XX:02-12	Blank= Centering Pin (std) BL2=2mm Board Lock BL3=3mm Board Lock	Blank=Tin (std) GD=Gold

**Pin 1**



**RoHS compliant**

Rev.	Description	Date	Approved	Drawing	Name	Date
A	DIM	05/28/10	Tom	Approved	Howard	08/10/99
				Checked	Lizzy	08/10/99
				Drawn	Tina	08/10/99
				0.0 ± 0.35	0.00 ± 0.20	Angles ± 3'
				UNIT: mm		

**Central Components Manufacturing**  
 440 Lincoln Blvd., Middlesex, New Jersey 08846  
 Phone 732 469-5720 888 288-5152 Fax 732 469-1919

Part No.: **JS-A-3046-XXS-XXX-XX**

Description: Header, .118" (3.0mm) pitch, single row, wire-to-board, right angle