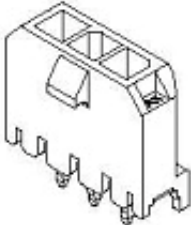
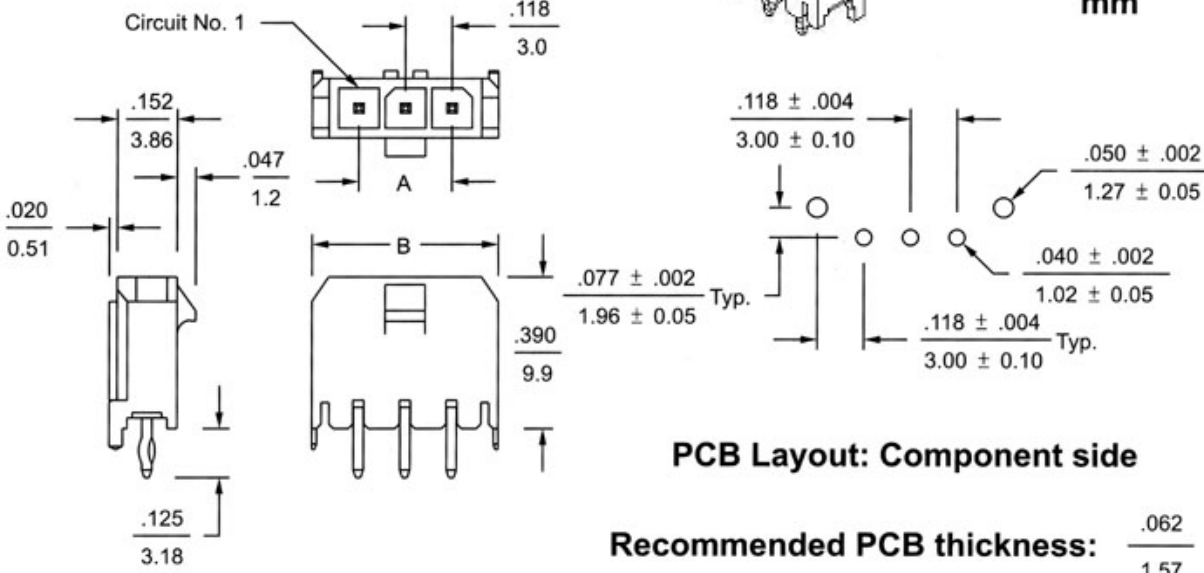


SPECIFICATIONS

Housing material: Nylon 6T +30% GF UL94V-0
 Housing Color: Black
 Contact material: .625mm square Brass pins
 Contact plating: Tin
 Pin dimensions: .025" (0.64mm) square



inches
mm



Dimensional Information - in. (mm)		
Pos.	Dim. A	Dim. B
2	0.118 (3.0)	0.354 (9.65)
3	0.236 (6.0)	0.472 (12.65)
4	0.354 (9.0)	0.591 (15.65)
5	0.472 (12.0)	0.709 (18.65)
6	0.591 (15.0)	0.827 (21.65)
7	0.709 (18.0)	0.945 (24.65)
8	0.827 (21.0)	1.063 (27.65)
9	0.945 (24.0)	1.181 (30.65)
10	1.063 (27.0)	1.299 (33.65)
11	1.181 (30.0)	1.417 (36.65)
12	1.299 (33.0)	1.535 (39.65)

Series	Type	Positions	Options	Plating
JS-A	3045	XX	XXX	XX
Pluggable Connector	Vertical Header 3045=Kinked Pins (std) 3045S=Straight Pins	02S-12S Single Row 02-24 Dual Row	Blank=Centering Peg (std) BL2=2mm Board Lock BL3=3.2mm Board Lock	Blank=Tin (std) GD=Gold

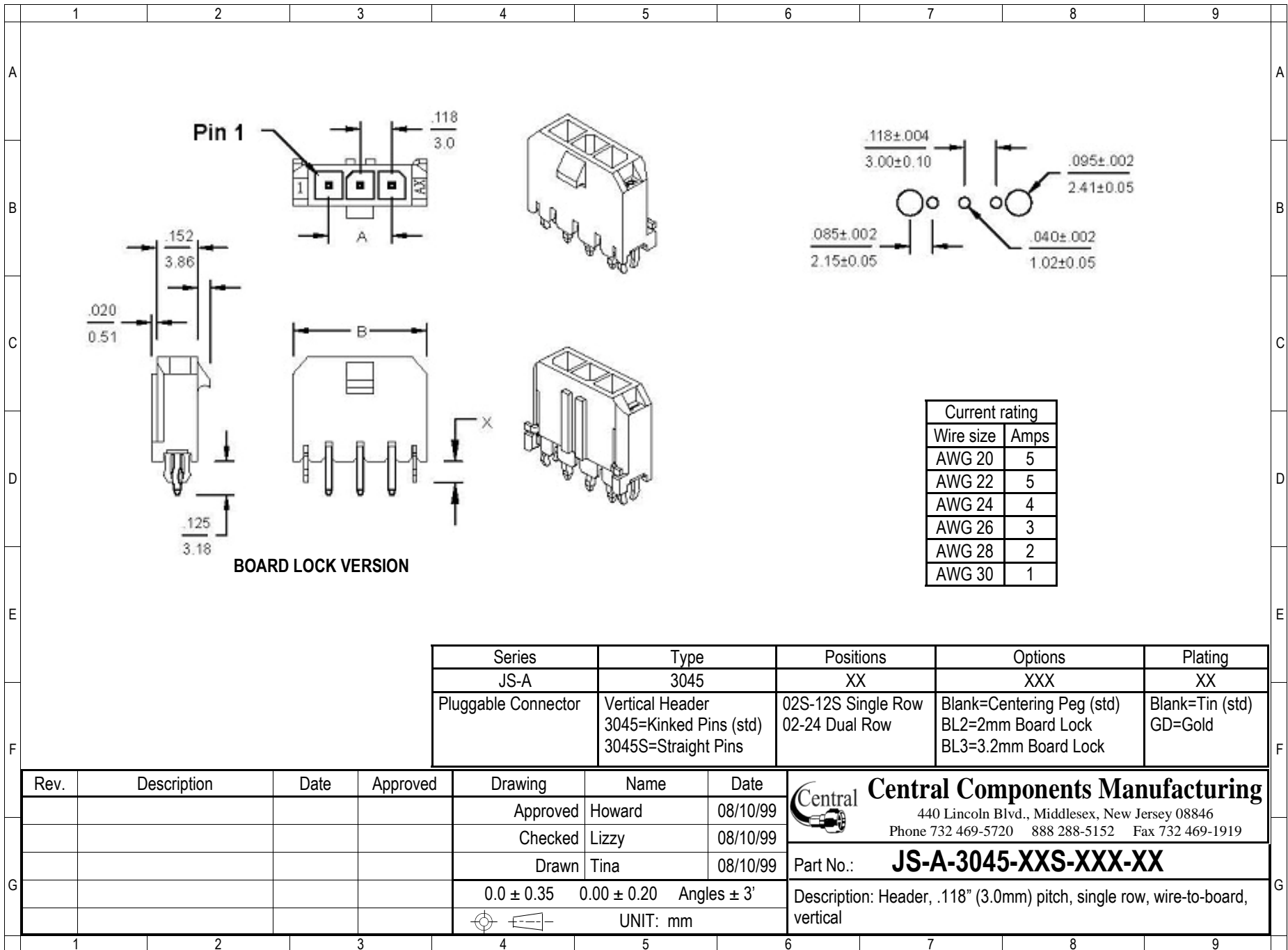
RoHS compliant

Rev.	Description	Date	Approved	Drawing	Name	Date
				Approved	Howard	08/10/99
				Checked	Lizzy	08/10/99
				Drawn	Tina	08/10/99
				0.0 ± 0.35	0.00 ± 0.20	Angles ± 3'
				UNIT: mm		

Central Components Manufacturing
 440 Lincoln Blvd., Middlesex, New Jersey 08846
 Phone 732 469-5720 888 288-5152 Fax 732 469-1919

Part No.: **JS-A-3045-XXS-XXX-XX**

Description: Header, .118" (3.0mm) pitch, single row, wire-to-board, vertical



Series	Type	Positions	Options	Plating
JS-A	3045	XX	XXX	XX
Pluggable Connector	Vertical Header 3045=Kinked Pins (std) 3045S=Straight Pins	02S-12S Single Row 02-24 Dual Row	Blank=Centering Peg (std) BL2=2mm Board Lock BL3=3.2mm Board Lock	Blank=Tin (std) GD=Gold

Rev.	Description	Date	Approved	Drawing	Name	Date
				Approved	Howard	08/10/99
				Checked	Lizzy	08/10/99
				Drawn	Tina	08/10/99
				0.0 ± 0.35	0.00 ± 0.20	Angles ± 3'
				UNIT: mm		

Central Components Manufacturing
 440 Lincoln Blvd., Middlesex, New Jersey 08846
 Phone 732 469-5720 888 288-5152 Fax 732 469-1919

Part No.: **JS-A-3045-XXS-XXX-XX**

Description: Header, .118" (3.0mm) pitch, single row, wire-to-board, vertical