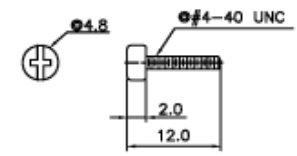
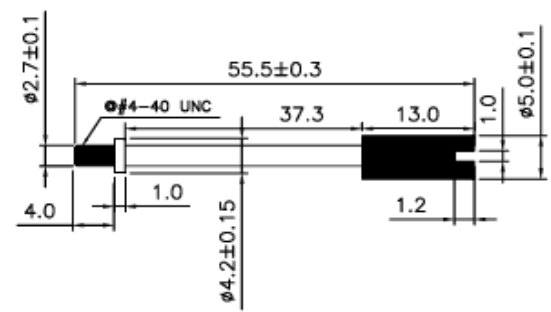
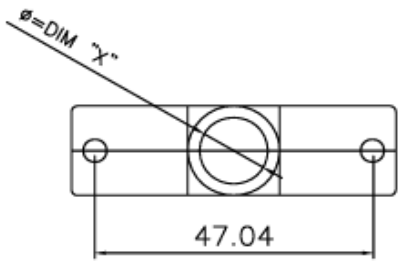


SPECIFICATIONS

Shell: Zink Alloy
 Scw: Steel
 Finish: Nickel Plated



Series	Type	Hood	Hardware	Option
25	R117DH	Z	XX	X
25 Pos. back shell	See drawing	Z=Zink Alloy	SS=Standard Screw TS=Metal Thumb Screw PS=Plastic Thumb Screw	B=9mm Entrance D=11mm Entrance E=13mm Entrance

RoHS compliant

Rev.	Description	Date	Approved	Drawing	Name	Date
				Approved	Howard	04/05/07
				Checked	Lizzy	04/05/07
				Drawn	Tina	04/05/07
				0.0 ± 0.35	0.00 ± 0.20	Angles ± 3'
				UNIT: mm		

Central Components Manufacturing
 440 Lincoln Blvd., Middlesex, New Jersey 08846
 Phone 732 469-5720 888 288-5152 Fax 732 469-1919

Part No.: **DBS25-R117DH-Z-TS-X**

Description: D-Sub metal hood, 25 position