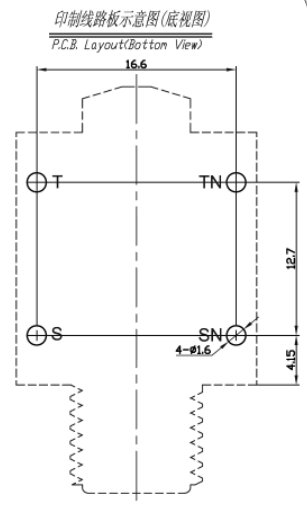
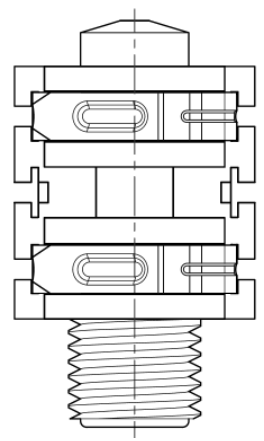
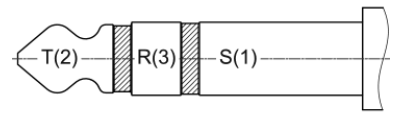


Schematic



PCB Layout (bottom view)



Mating connector layout

Item	Name	Material	Finish
1	Spring Contact	Bronze	Silver
2	Trip Contact	HT62 T, t=0.4	Silver
3	Housing	PA66 + 30%	Black
4	Nut		
5	Gasket		

RoHS compliant

Rev.	Description	Date	Approved	Drawing	Name	Date
				Approved	Howard	01/14/11
				Checked	Lizzy	01/14/11
				Drawn	Tina	01/14/11
				0.0 ± 0.35	0.00 ± 0.20	Angles ± 3'
				UNIT: mm		

Central Components Manufacturing
 440 Lincoln Blvd., Middlesex, New Jersey 08846
 Phone 732 469-5720 888 288-5152 Fax 732 469-1919

Part No.: **CPR-6253-A**

Description: 6.3mm switched mono phono jack