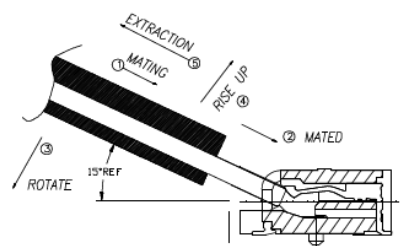
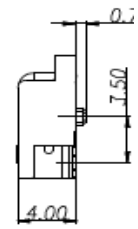
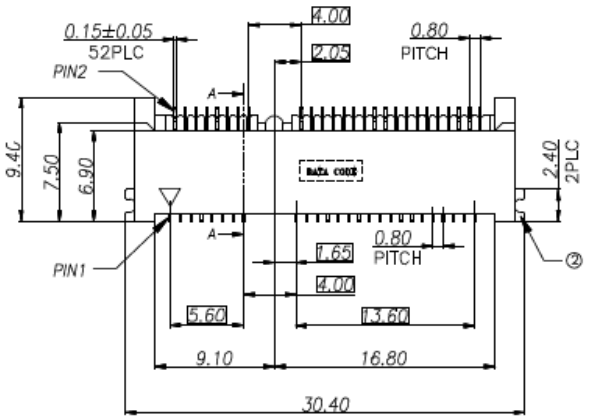
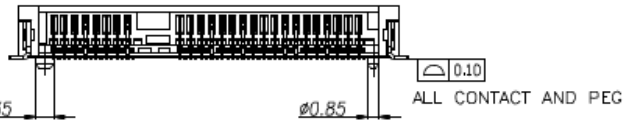


SPECIFICATIONS

Voltage Rating:	50VAC per contact
Current Rating:	0.5 A per contact
Housing Material:	LCP high plastic UL94V-0
Insulation Resistance:	55 milliohms max
Contact Material:	Copper Alloy
Contact Plating:	Gold
Contact Resistance:	55 milliohms max
Peg:	Copper Alloy
Withstanding:	300V RMS min
Insertion Force:	2.3Kgf max
Withdrawal Force:	2.3Kgf max
Durability:	50 Cycles



HOW TO MATE AND UNMATE
 MATE ① → ②
 UNMATE ③ ← ④



RoHS compliant

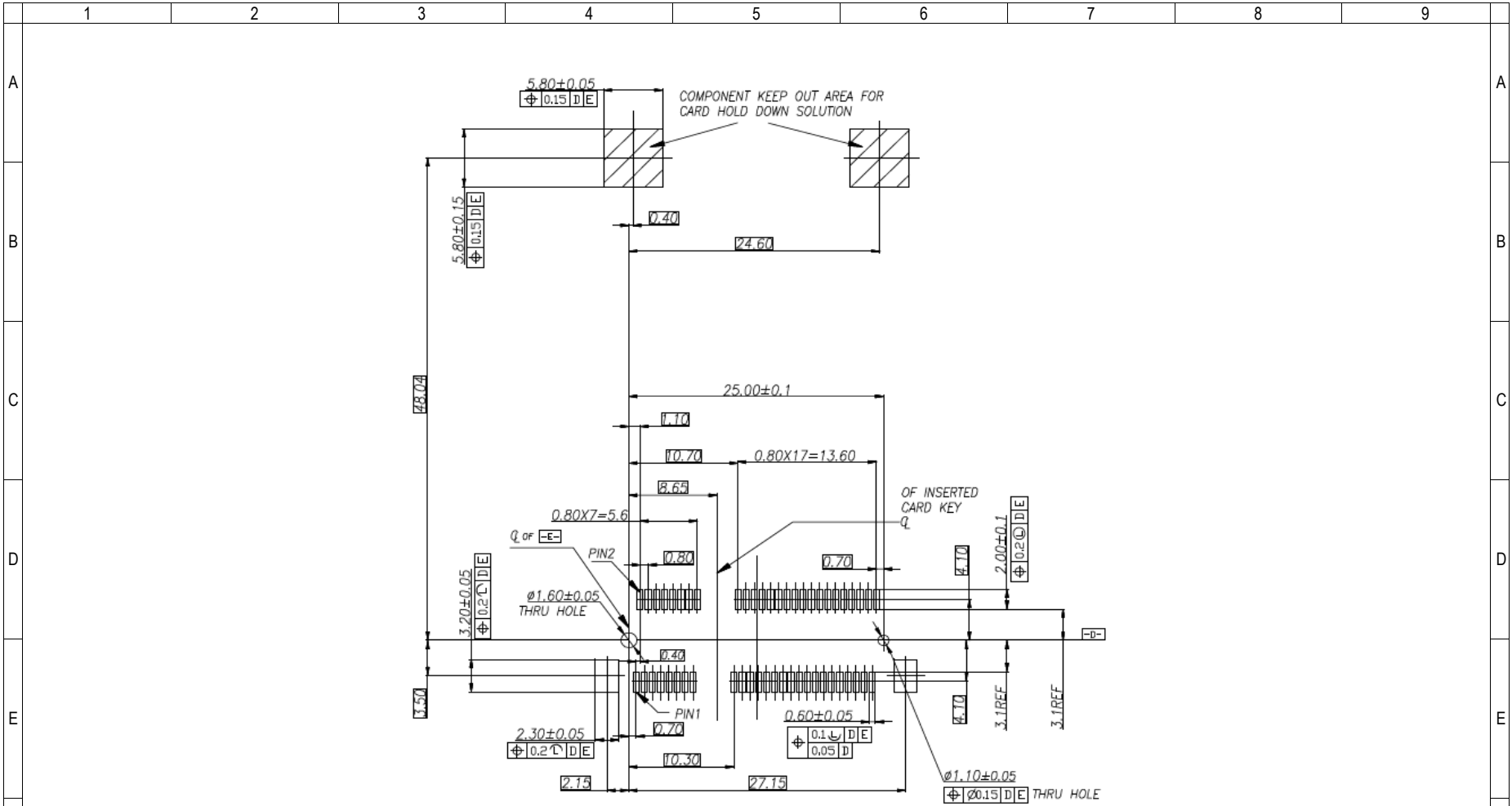
Series	Type	Positions	Height	Color	Plating	Package
CMPCI	A01	52	40	XX	XX	XX
Mini PCI socket	See drawing	52 Positions	4.0mm	BK=Black WT=White	GDXX=Gold XX: Flash if blank, 3, 5, 10, 15µ"	TB=Tube TR=Reel TY=Tray

Rev.	Description	Date	Approved	Drawing	Name	Date
				Approved	Howard	08/01/12
				Checked	Lizzy	08/01/12
				Drawn	Tina	08/01/12
				0.0 ± 0.35	0.00 ± 0.20	Angles ± 3'
				UNIT: mm		

Central Components Manufacturing
 440 Lincoln Blvd., Middlesex, New Jersey 08846
 Phone 732 469-5720 888 288-5152 Fax 732 469-1919

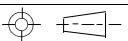
Part No.: **CMPCI-A01-52-40-XX-GDXX-XX**

Description: Mini PCI 52 position 4.0mm height



RECOMMENDED PCB LAYOUT
THICKNESS: 1.20±0.05mm

RoHS compliant

Rev.	Description	Date	Approved	Drawing	Name	Date
				Approved	Howard	08/01/12
				Checked	Lizzy	08/01/12
				Drawn	Tina	08/01/12
				0.0 ± 0.35	0.00 ± 0.20	Angles ± 3'
				 UNIT: mm		

Central Components Manufacturing
 440 Lincoln Blvd., Middlesex, New Jersey 08846
 Phone 732 469-5720 888 288-5152 Fax 732 469-1919

Part No.:

CMPCI-A01-52-40-XX-GDXX-XX

Description: Mini PCI 52 position 4.0mm height

