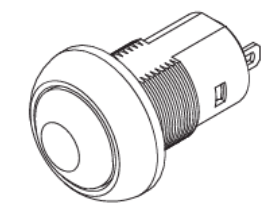
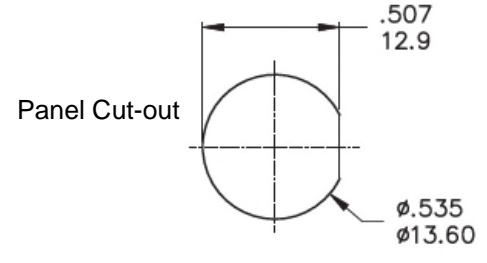
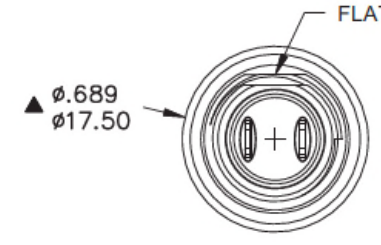


SPECIFICATIONS
 Electrical Rating: 100mA, 24VDC
 2A, 125VAC
 Electrical Durability: 200,000 cycles min
 Mechanical Durability: 200,000 cycles at 24VAC min
 10,000 cycles 125VAC min
 Contact Resistance: 50mΩ max
 Housing: Nylon 6/6, UL 94V-0
 Insulation Resistance: 1GΩ at 500VDC min
 Cap and Bushing: Polyamide 6/6
 Withstanding: 1000 VAC RMS
 Durability: 10,000 Cycles
 Processing Temp: 350°C/1-min max
 Waterproof: IP67



RoHS Compliant

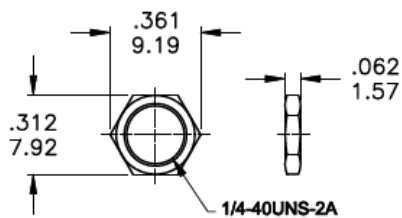
Series	Type	Version	Terminals	Actuator Color	Terminal Plating
SWT	P	PAL6	S	XX	GD
Switch	Pushbutton	OFF-ON SPST Rocker Switch Normally Open	S=Solder Type	BK=Black RD=Red	GD=Gold

Rev.	Description	Date	Approved	Drawing	Name	Date
				Approved	Howard	11/25/15
				Checked	Lizzy	11/25/15
				Drawn	Tina	11/25/15
				0.0 ± 0.35	0.00 ± 0.20	Angles ± 3°
				UNIT: mm		

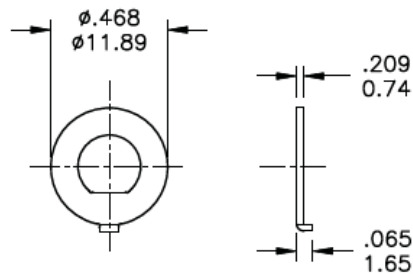
Central Components Manufacturing
 440 Lincoln Blvd., Middlesex, New Jersey 08846
 Phone 732 469-5720 888 288-5152 Fax 732 469-1919

Part No.: **SWT-P-PAL6-S-XX-GD**

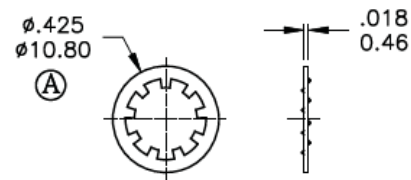
Description: Locking On Off Pushbutton Switch



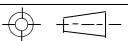
1/4 INCH NUT




LOCKING RING



LOCKING WASHER

Rev.	Description	Date	Approved	Drawing	Name	Date
				Approved	Howard	11/25/15
				Checked	Lizzy	11/25/15
				Drawn	Tina	11/25/15
				0.0 ± 0.35	0.00 ± 0.20	Angles ± 3°
						UNIT: mm



Central Components Manufacturing
440 Lincoln Blvd., Middlesex, New Jersey 08846
Phone 732 469-5720 888 288-5152 Fax 732 469-1919

Part No.: **SWT-P-PAL6-S-XX-GD**

Description: Locking On Off Pushbutton Switch