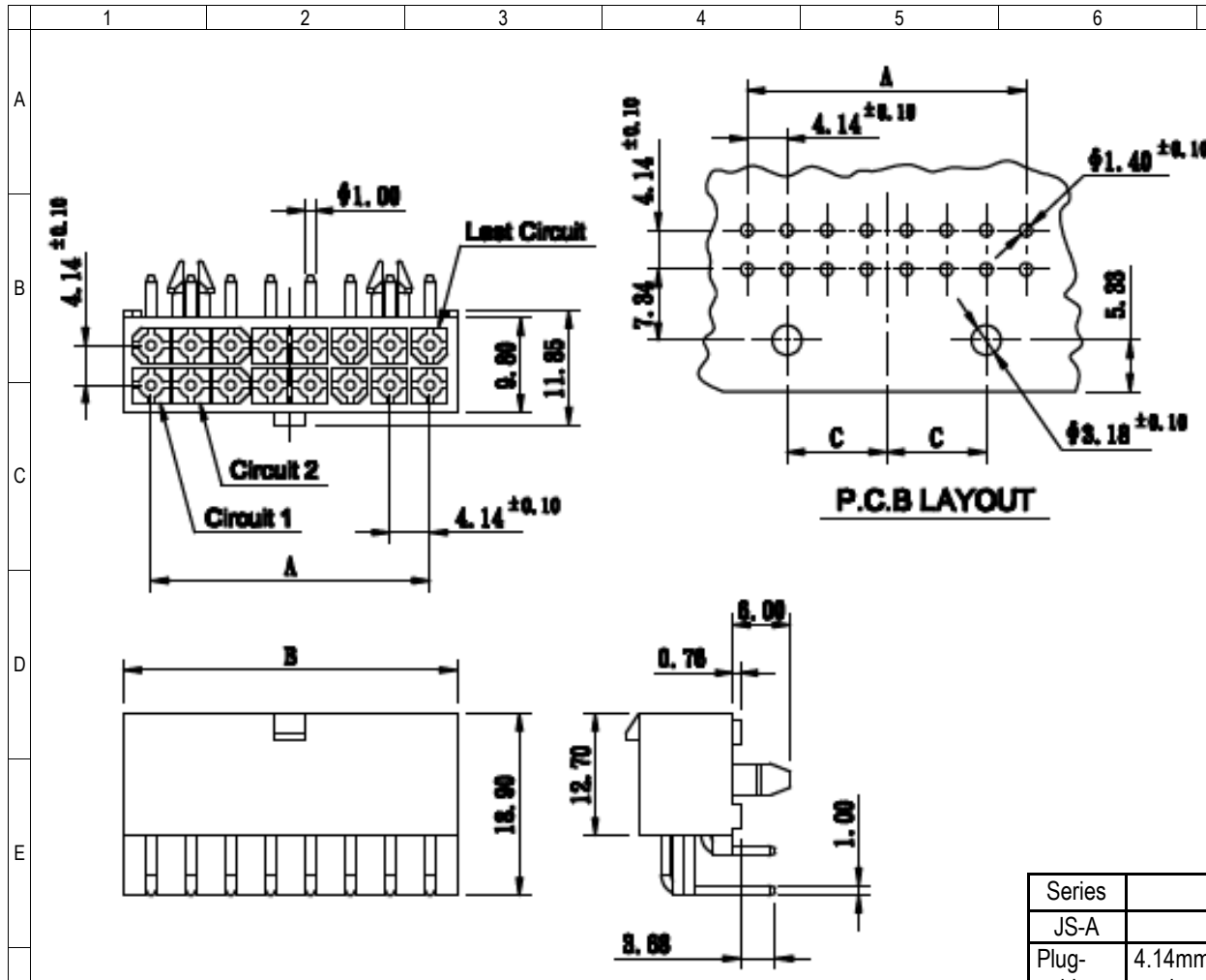


SPECIFICATIONS

Material: PA66
 Current Rating: 5 VAC/VDC
 Voltage Rating: 300 VAC/VDC
 Insulation Resistance: 1000MΩ min.
 Withstanding: 1500VAC/1min.
 Operating Temp: -25°C to +90°C

Dimensions			
Pos.	A	B	C
4	4.14	9.83	-
6	8.28	13.97	-
8	12.42	18.11	-
10	16.56	22.25	-
12	20.70	26.39	-
14	24.84	30.56	8.28
16	28.98	34.70	10.35
18	33.12	38.84	8.28
20	37.26	42.98	10.35
22	41.40	47.12	10.35
24	45.54	51.26	10.35

P.C.B LAYOUT



Series	Type	Positions	Options
JS-A	4140R	XX	XX
Plug-gable connectors	4.14mm dual row right angle male header	04-24	None if blank GDXX=Gold Plate XX: flash if blank, 10, 15, 30μ"

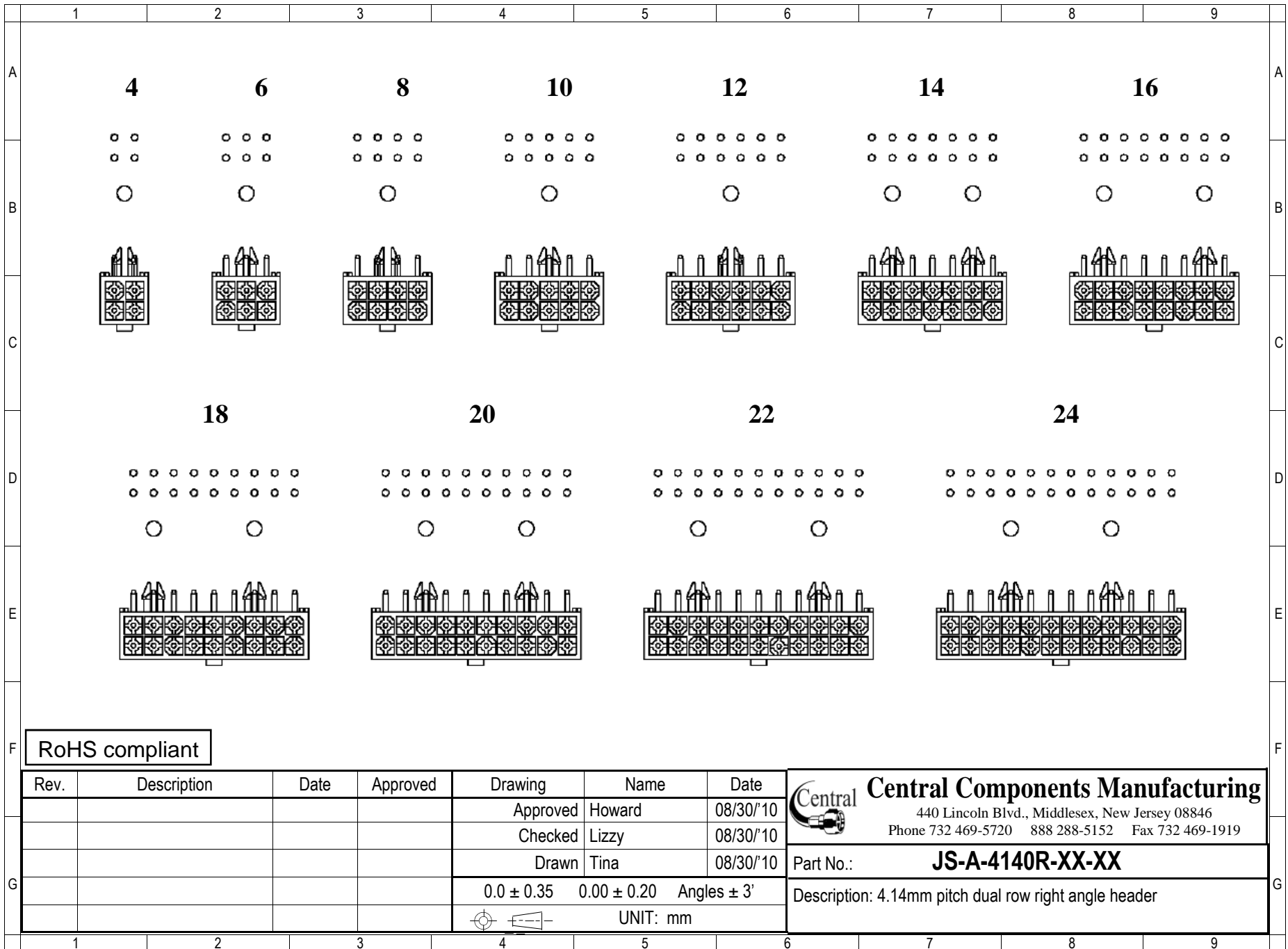
RoHS compliant

Rev.	Description	Date	Approved	Drawing	Name	Date
				Approved	Howard	08/30/10
				Checked	Lizzy	08/30/10
				Drawn	Tina	08/30/10
				0.0 ± 0.35	0.00 ± 0.20	Angles ± 3'
				UNIT: mm		

Central Components Manufacturing
 440 Lincoln Blvd., Middlesex, New Jersey 08846
 Phone 732 469-5720 888 288-5152 Fax 732 469-1919

Part No.: **JS-A-4140R-XX-XX**

Description: 4.14mm pitch dual row right angle header



RoHS compliant

Rev.	Description	Date	Approved	Drawing	Name	Date
				Approved	Howard	08/30/10
				Checked	Lizzy	08/30/10
				Drawn	Tina	08/30/10
				0.0 ± 0.35	0.00 ± 0.20	Angles ± 3'
				UNIT: mm		


Central Components Manufacturing
 440 Lincoln Blvd., Middlesex, New Jersey 08846
 Phone 732 469-5720 888 288-5152 Fax 732 469-1919

Part No.: **JS-A-4140R-XX-XX**

Description: 4.14mm pitch dual row right angle header