

**SPECIFICATIONS**  
Voltage Rating: 250V AC max  
Current rating: 3A AC/DC  
Contact material: Phosphor bronze or brass  
Contact resistance: 20 milliohms max.  
Insulation material: PBT, glass reinforced, UL94V-0 rated, Black  
Insulation resistance: 1000 megohms min.  
Withstanding: 500VAC for 1 min.  
Operating temperature: -40°C to 105°C

Terminated with 1.27mm pitch flat ribbon cable

Pos.	A	B
10	11.43	18.17
16	19.05	25.79
20	24.13	30.87
26	31.75	38.49
34	41.91	48.65
40	49.53	56.27
50	62.23	68.97
60	74.93	81.67

Series	Contacts	Plating	Rows
FCP	XXA	XX	4R
IDC transition plug 4 Rows	XX: 10, 16, 20, 26, 34, 40, 50, 60	TN=Tin SG=Selective Gold	4 Rows

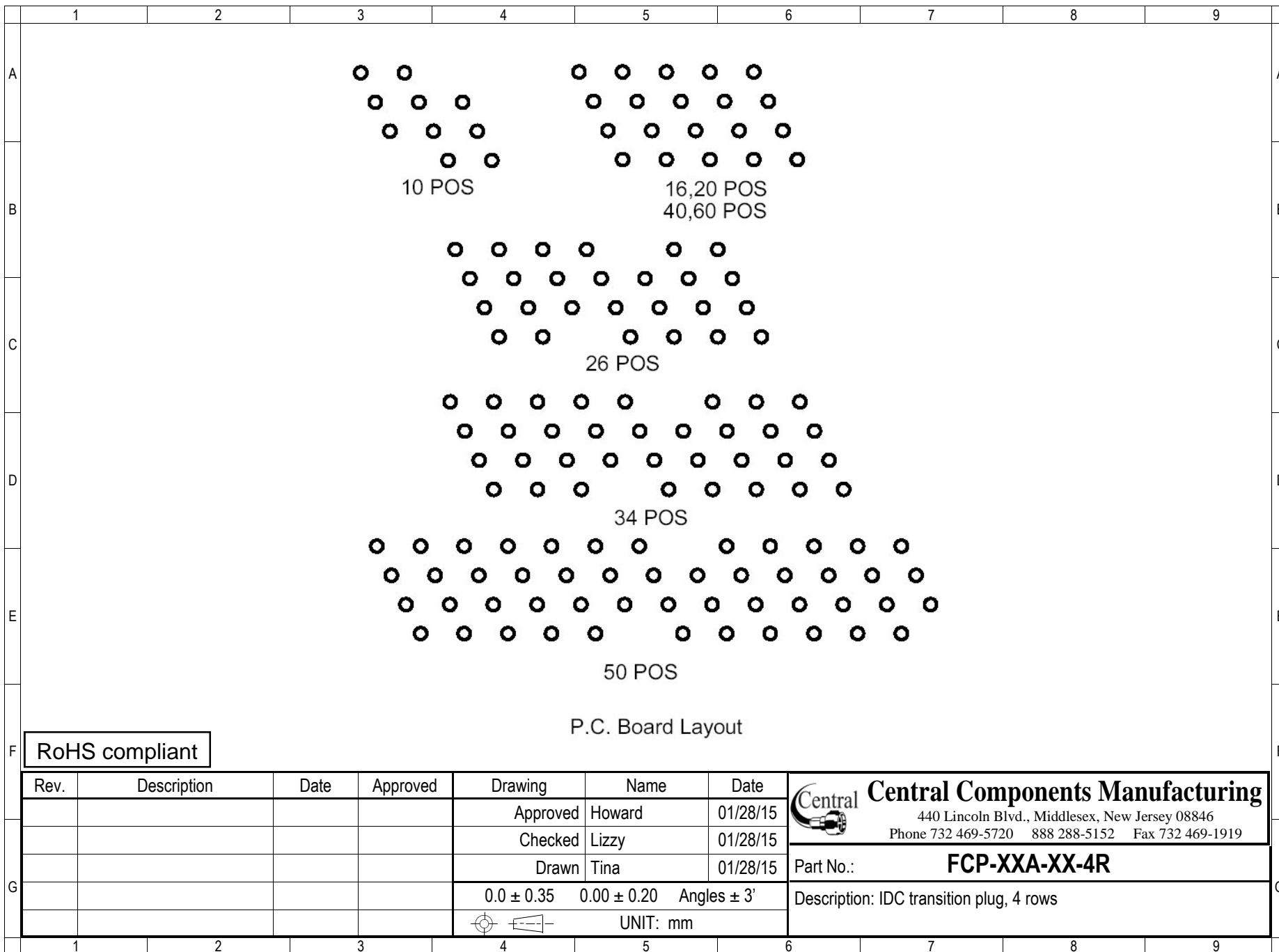
RoHS compliant

Rev.	Description	Date	Approved	Drawing	Name	Date
				Approved	Howard	01/28/15
				Checked	Lizzy	01/28/15
				Drawn	Tina	01/28/15
				0.0 ± 0.35	0.00 ± 0.20	Angles ± 3'
				UNIT: mm		

**Central Components Manufacturing**  
440 Lincoln Blvd., Middlesex, New Jersey 08846  
Phone 732 469-5720 888 288-5152 Fax 732 469-1919

Part No.: **FCP-XXA-XX-4R**

Description: IDC transition plug, 4 rows



10 POS

16,20 POS  
40,60 POS

26 POS

34 POS

50 POS

P.C. Board Layout

RoHS compliant

Rev.	Description	Date	Approved	Drawing	Name	Date
				Approved	Howard	01/28/15
				Checked	Lizzy	01/28/15
				Drawn	Tina	01/28/15
				0.0 ± 0.35	0.00 ± 0.20	Angles ± 3'
					UNIT: mm	

**Central Components Manufacturing**  
 440 Lincoln Blvd., Middlesex, New Jersey 08846  
 Phone 732 469-5720 888 288-5152 Fax 732 469-1919

Part No.: **FCP-XXA-XX-4R**

Description: IDC transition plug, 4 rows