

**SPECIFICATIONS**  
 Voltage Rating: 250V AC max  
 Current rating: 3A AC/DC  
 Contact material: Phosphor bronze or brass  
 Contact resistance: 20 milliohms max.  
 Insulation material: PBT, glass reinforced, UL94V-0 rated, Black  
 Insulation resistance: 1000 megohms min.  
 Withstanding: 500VAC for 1 min.  
 Operating temperature: -40°C to 105°C

Terminated with 1.27mm pitch flat ribbon cable

Pos.	A	B
10	11.43	18.17
16	19.05	25.79
20	24.13	30.87
26	31.75	38.49
34	41.91	48.65
40	49.53	56.27
50	62.23	68.97
60	74.93	81.67

Series	Contacts	Plating
FCP-DV	XX	XX
IDC transition plug 4 Rows	10, 16, 20, 26, 34, 40, 50, 60	[blank]=Flash TN=Tin SGXX=Selective Gold XX=Flash if Blank, 5,10,15,30u"

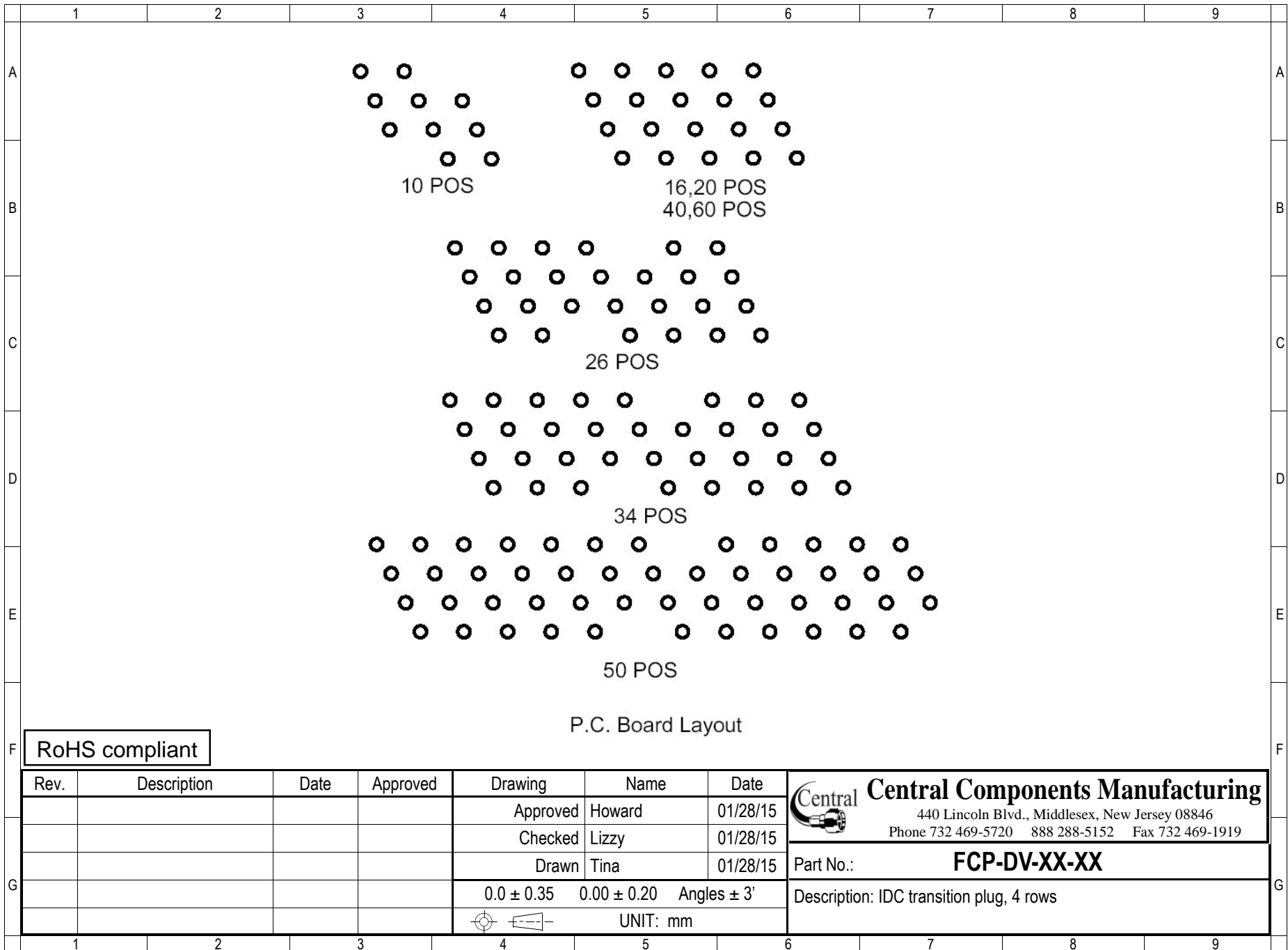
RoHS compliant

Rev.	Description	Date	Approved	Drawing	Name	Date
				Approved	Howard	01/28/15
				Checked	Lizzy	01/28/15
				Drawn	Tina	01/28/15
				0.0 ± 0.35	0.00 ± 0.20	Angles ± 3'
				UNIT: mm		

**Central Components Manufacturing**  
 440 Lincoln Blvd., Middlesex, New Jersey 08846  
 Phone 732 469-5720 888 288-5152 Fax 732 469-1919

Part No.: **FCP-DV-XX-XX**

Description: IDC transition plug, 4 rows



RoHS compliant

Rev.	Description	Date	Approved	Drawing	Name	Date
				Approved	Howard	01/28/15
				Checked	Lizzy	01/28/15
				Drawn	Tina	01/28/15
				0.0 ± 0.35	0.00 ± 0.20	Angles ± 3'
					UNIT: mm	

<b>Central Components Manufacturing</b> 440 Lincoln Blvd., Middlesex, New Jersey 08846 Phone 732 469-5720 888 288-5152 Fax 732 469-1919	Part No.:	<b>FCP-DV-XX-XX</b>
	Description: IDC transition plug, 4 rows	