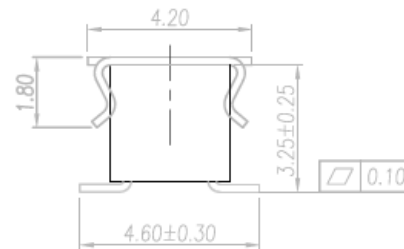
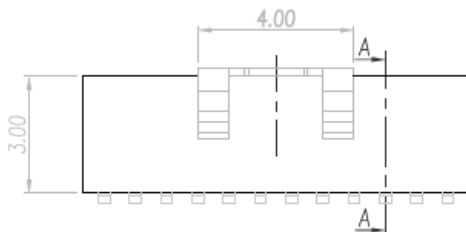


Section A-A

SPECIFICATIONS

Current Rating:	0.5A
Contacts:	Phos Bronze
Contact Resistance:	20 Milliohms max
Housing:	LCP or equal, UL 94V-0
Insulation Resistance:	500 Megohms min
Withstanding:	200VAC
Operating Temp:	-40°C to +105°C



Series	Rows	Style/Profile	Positions	Plating	Options
ERS	0X	XX	XX	XX	XX-XX
.80mm (.03") pitch Receptacle Strip	02=Dual St 01=Single St	Blank=3.0mm (0.12")	06-100 Dual 03- 50 Single	TN=Tin SGXX=Selective Gold GDXX=Gold XX: Flash if blank, 10, 20, 30µ"	SM=Surface Mount TB=Tube BC=Tube with Cap CT=Carton CC=Carton with Cap RC=Reel with Cap

RoHS Compliant

Rev.	Description	Date	Approved	Drawing	Name	Date
				Approved	Howard	08/12/11
				Checked	Lizzy	08/12/11
				Drawn	Tina	08/12/11
				0.0 ± 0.35	0.00 ± 0.20	Angles ± 3'
				UNIT: mm		

Central Components Manufacturing
 440 Lincoln Blvd., Middlesex, New Jersey 08846
 Phone 732 469-5720 888 288-5152 Fax 732 469-1919

Part No.: **ERS-02-XX-XX-XX-SM-XX**

Description: 0.8mm pitch female surface mount header