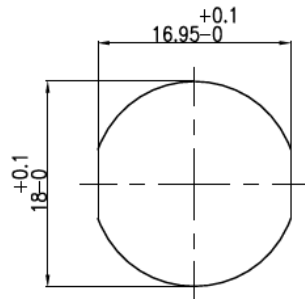
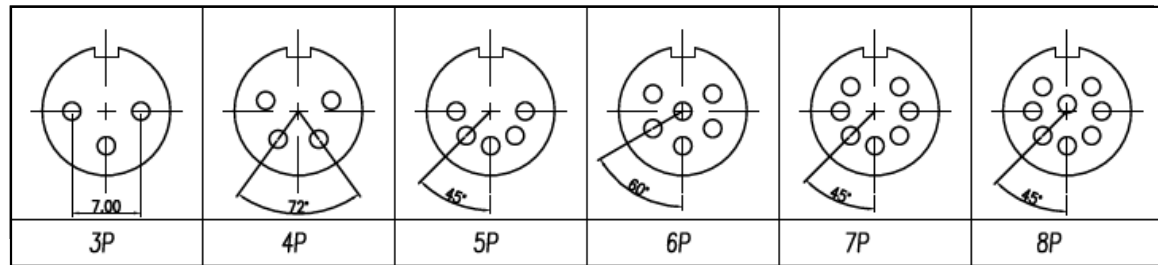


SPECIFICATIONS

Current Rating: 4A
 Voltage Rating: 100V
 Housing: PBT UL 94V-0, Black
 Contacts: Brass, Gold Plated
 O-Ring: EPDM, Black
 Shell: Brass, Nickel Plated
 Nut: Brass, Nickel Plated
 Operating Temperature: -40°C to +85°C
 Water Proof Rating: IPX8



RECOMMEND PANEL CUT-OUT



Series	Type	Style	Positions	Plating
CRF	M16	2001NP	0X	GD
RF Connector	M16 Circular	See Drawing	3-5	Gold

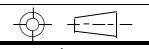
RoHS Compliant

Rev.	Description	Date	Approved	Drawing	Name	Date
				Approved	Howard	00/00/00
				Checked	Lizzy	00/00/00
				Drawn	Tina	00/00/00
				0.0 ± 0.35	0.00 ± 0.20	Angles ± 3'

Central Components Manufacturing
 440 Lincoln Blvd., Middlesex, New Jersey 08846
 Phone 732 469-5720 888 288-5152 Fax 732 469-1919

Part No.: **CRF-M16-2001NP-0X-GD**

Description: M16 circular female connector, rear panel mount, front lock hut



UNIT: mm