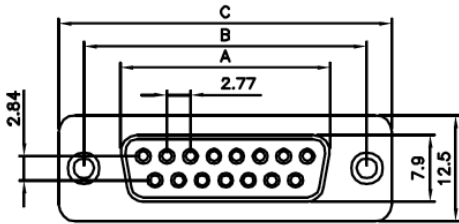
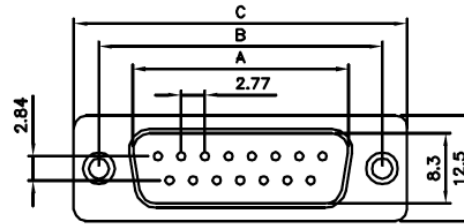


FEMALE

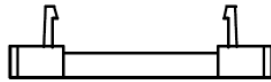
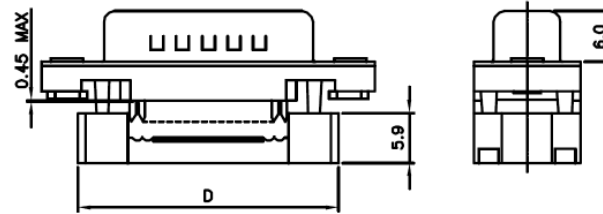
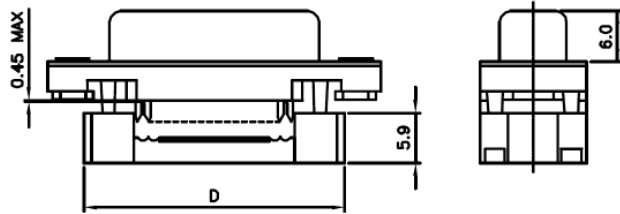


MALE

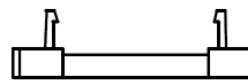


SPECIFICATIONS

Operating Voltage:	250V AC Max.
Current Rating:	3A Max.
Contact Resistance:	15mΩ Max.
Insulation Resistance:	3000 mΩ Min. @500V DC
Insulator:	Thermal Plastic UL94V-0
Contacts:	Copper Alloy
Shell:	Steel
Rivet, Boardlock:	Copper Alloy
Underplating:	50u"~150u" Nickel
Contact Area:	1u" ~ 30u" Gold
Withstanding:	1000AC/minute
Temp Range:	-55C to +105C



POSITION	A	B	C	D
9F	16.30	25.00	30.8	22.4
15F	24.60	33.30	39.2	30.8
25F	38.30	47.10	53.1	44.5
37F	54.80	63.50	69.4	61.4



POSITION	A	B	C	D
9M	16.92	25.00	30.8	22.4
15M	25.25	33.30	39.2	30.8
25M	38.96	47.10	53.1	44.5
37M	55.42	63.50	69.4	61.4

Series	Type	Shell	Face Options	Contact Finish	Color	Options
DSXX	XFC	X	XX	XX	XX	XX
D-Sub Connector XX=09,15,25,37,50	MFC=Male IDC FFC=Female IDC	M=Metal P=Plastic	01=.120 Thru Hole 02=4-40 Threaded 03=Jackscrew 4.8x11.8mm 4-40 03M=Jackscrew 4.8x11.8mm M3 03L=Jackscrew 4.8x12.0mm 4-40	GD=Gold Flash SGXX=Selective Gold XX=Flash if blank, 3, 5, 10, 15, 30u"	Blank=Black BL=Blue	Blank=None SR=Strain Relief

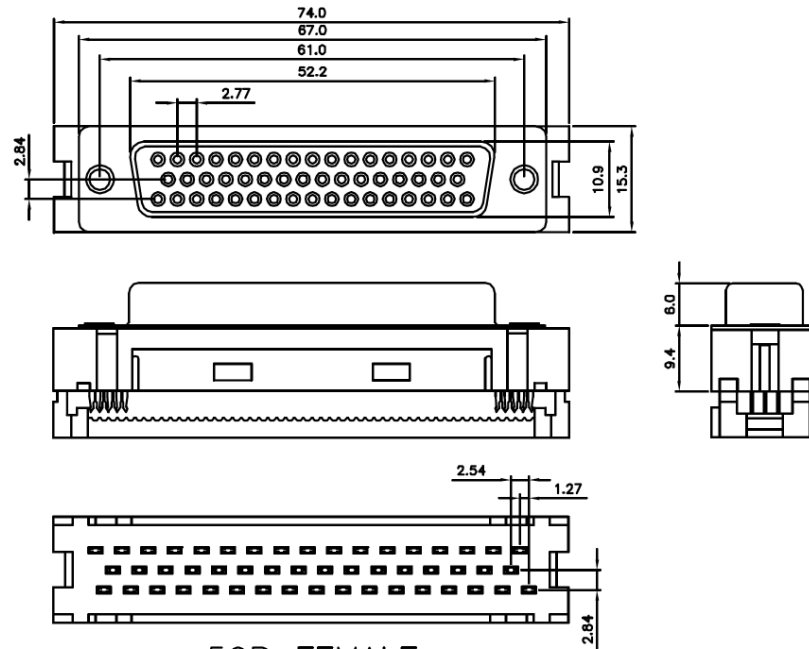
RoHS compliant

Rev.	Description	Date	Approved	Drawing	Name	Date
				Approved	Howard	11/25/13
				Checked	Lizzy	11/25/13
				Drawn	Tina	11/25/13
				0.0 ± 0.35	0.00 ± 0.20	Angles ± 3'
				UNIT: mm		

Central Components Manufacturing
 440 Lincoln Blvd., Middlesex, New Jersey 08846
 Phone 732 469-5720 888 288-5152 Fax 732 469-1919

Part No.: **DSXX-XFC-X-02-XX-XX-XX**

Description: IDC D-Sub, Metal Body



50P FEMALE

Rev.	Description	Date	Approved	Drawing	Name	Date
				Approved	Howard	11/25/13
				Checked	Lizzy	11/25/13
				Drawn	Tina	11/25/13
				0.0 ± 0.35	0.00 ± 0.20	Angles ± 3'
					UNIT: mm	

Central Components Manufacturing
440 Lincoln Blvd., Middlesex, New Jersey 08846
Phone 732 469-5720 888 288-5152 Fax 732 469-1919

Part No.: **DSXX-XFC-X-02-XX-XX-XX**

Description: IDC D-Sub, Metal Body