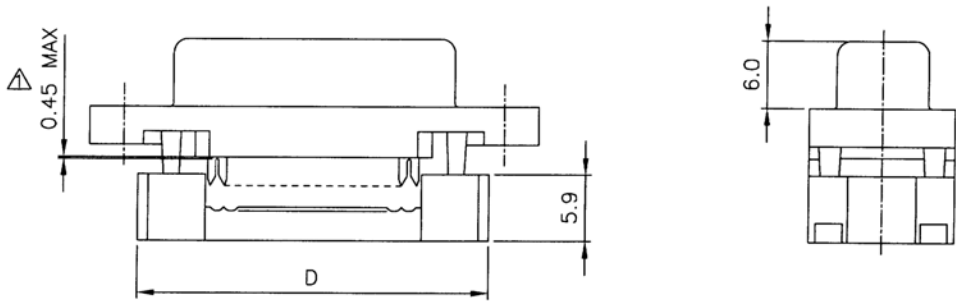
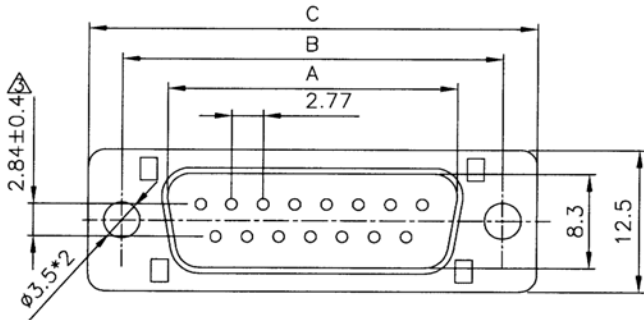


SPECIFICATIONS

Insulator Material: Thermo Plastic UL94V-0
 Contacts: Copper Alloy
 Underplate: 50u" ~ 100u" Nicke3I
 Contact Area: 1u" ~ 30u" Selective Gold
 Operation Voltage: 250 VAC Max.
 Current Rating: 3 Amps Max.
 Contact Resistance: 15 mohms max.
 Insulation Resistance: 3000 Mohms Min
 Withstanding: 1000 VAC
 Temperature Range: -55C to +105C



Dimensions (mm)				
Pos.	A	B	C	D
9	16.92	25.00	30.8	22.4
15	25.25	33.30	39.20	30.80
25	38.96	47.10	53.10	44.50
37	55.42	63.50	69.40	61.40

Series	Type	Shell	Mounting face	Color	Options
DSXX	MFC3	X	XX	XX	XX
D-Sub connector XX=Pins 09, 15, 25, 37	MFC3=Male plug FFC3=Female socket	P=Plastic	01=Standard Through Hole	BL=Blue GY=Grey BK=Black	GDXX XX=Flash if blank, 5,10,15,20, 30µ" gold

RoHS compliant

Rev.	Description	Date	Approved	Drawing	Name	Date
				Approved	Howard	08/10/99
				Checked	Lizzy	08/10/99
				Drawn	Tina	08/10/99
				0.0 ± 0.35	0.00 ± 0.20	Angles ± 3'
				UNIT: mm		

Central Components Manufacturing
 440 Lincoln Blvd., Middlesex, New Jersey 08846
 Phone 732 469-5720 888 288-5152 Fax 732 469-1919

Part No.: **DSXX-MFC3-P-01-XX-XX**

Description: D-Sub IDC for Flat Ribbon Cable