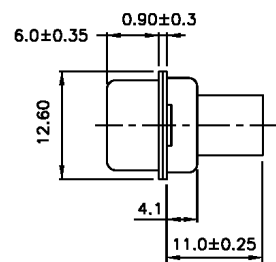
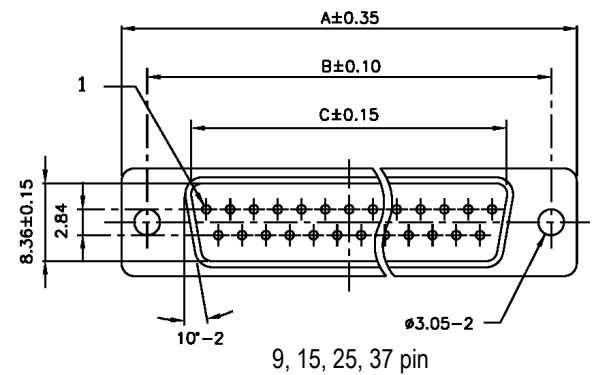


SPECIFICATIONS

- Current rating: 5 amps
- Voltage rating: 500VAC
- Contact resistance: 15 milliohms max.
- Insulation resistance: 1,000 megohms min.
- Shell material: Steel
- Shell plating: Tin chromate
- Insulator option 1: PBT+30% glass fiber, UL94V-0
- Insulator option 2: Nylon 66, UL94V-0
- Insulator color: Black
- Operating temperature: -50°C to +100°C



Dimensions			
Pins	A	B	C
9	30.80	24.99	16.92
15	39.15	33.32	25.25
25	53.00	47.04	38.96
37	69.30	63.50	55.42
50	67.00	61.00	52.80

Series	Gender	Mounting Face	Options
DSXX	XCP	XXX	XX
D-Sub connector XX=Pins 09, 15, 25, 37, 50	MCP=Male FCP=Female	[blank]=.120" through hole RCN=Riveted clinch nut #4-40 RJS=Riveted jackscrew #4-40	[blank]=None YC=Yellow chromate 30GD=30μ" gold plate

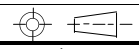
RoHS compliant

Rev.	Description	Date	Approved	Drawing	Name	Date
				Approved	Howard	08/10/99
				Checked	Lizzy	08/10/99
				Drawn	Tina	08/10/99
				0.0 ± 0.35	0.00 ± 0.20	Angles ± 3'

Central Components Manufacturing
 440 Lincoln Blvd., Middlesex, New Jersey 08846
 Phone 732 469-5720 888 288-5152 Fax 732 469-1919

Part No.: **DSXX-MCP-XXX-XX**

Description: D-Subminiature connector, crimp housing type, male



UNIT: mm