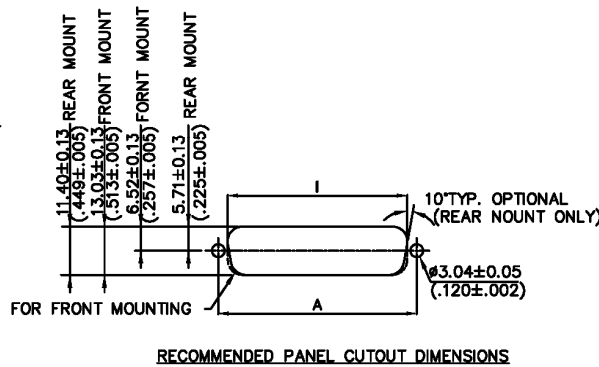
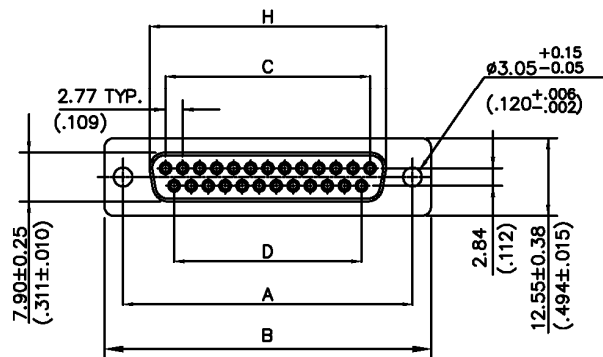


SPECIFICATIONS

Current Rating: 1 Amp
 Contact Material: Phosphor Bronze
 Contact Plating: Selective Gold
 Contact Resistance: 15mΩ Max
 Insulator Material: PBT & G/F Reinforced UL94V-0
 Insulation Resistance: 1000MΩ min. (at 500V DC)
 Shell Material: SPCC, Tin or Nickel Plated
 Withstanding: AC 500V min. for one min
 Operating Temp: -25°C to 85°C



Dimensions (mm)				
Pos.	A	B	C	D
9	24.99	30.80	11.08	8.31
15	33.32	39.10	19.39	16.62
25	47.04	53.09	33.24	30.47
37	63.50	69.40	49.86	47.09
Pos.	E	F	H	
9	16.10	18.60	16.33	
15	24.00	26.60	24.66	
25	38.14	40.90	38.38	
37	54.60	57.10	54.84	

Series	Type	Shell	Face Options	Contact Finish	Color	Options
DSXX	XFC	M2X	XX	XX	XX	XX
D-Sub Connector XX=09,15,25,37	MFC=Male IDC FFC=Female IDC	M2T=Metal Tin Plate M2N=Metal Nickel Plate	01=.120 Thru Hole 02=4-40 Threaded Insert	Blank=Selective Gold SG15=15u" Sel. Gold SG30=30u" Sel. Gold	Blank=Black BL=Blue GY=Gray	Blank=None SSR=Stain Steel Strain Relief PSR=Plastic Strain Relief

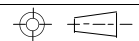
RoHS compliant

Rev.	Description	Date	Approved	Drawing	Name	Date
				Approved	Howard	06/20/08
				Checked	Lizzy	06/20/08
				Drawn	Tina	06/20/08
				0.0 ± 0.35	0.00 ± 0.20	Angles ± 3'

Central Components Manufacturing
 440 Lincoln Blvd., Middlesex, New Jersey 08846
 Phone 732 469-5720 888 288-5152 Fax 732 469-1919

Part No.: **DSXX-FFC-M2X-01-XX-XX-XX**

Description: IDC D-Sub Female Connector



UNIT: mm