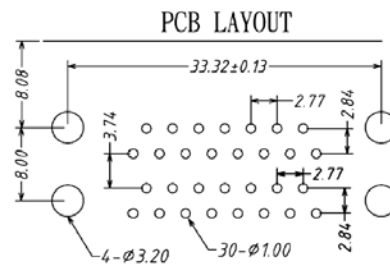
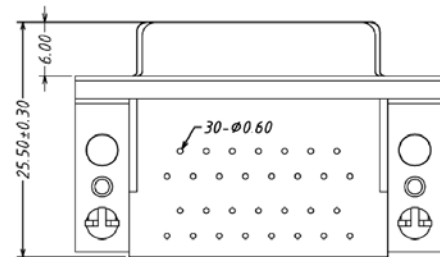


SPECIFICATIONS

Current rating: 3 amps
 Contact material: Brass
 Contact resistance: 25 milliohms max.
 Insulator material: PBT, 30% glass filled, UL94V-0
 Insulation resistance: 5,000 megohms min. @ 500VDC
 Withstanding: 1,000VAC for 1 min.
 Operating temperature: -55°C to +105°C
 Contact insertion force: 300gf max.
 Contact separation force: 25gf min.



Series	Configuration	Port Spacing	Mounting	Options
DSDXX	FF	X	XX	XX
Stacked D-sub, 15 positions XX=Upper positions YY=Lower positions (Omitted if same as upper)	MM=Male over male FF=Female over female MF=Male over female FM=Female over male	A=.625" B=.750" C=.900"	01=.120" thru holes 02=#4-40 threaded holes 03=Threaded holes with jackscrews 04=Boardlocks, front and rear 04S=Boardlocks, rear only 04F=Boardlocks, front only	[blank]=None FF=Ferrite filtered 30GD=30µ" gold 15GD=15µ" gold

RoHS compliant

Rev.	Description	Date	Approved	Drawing	Name	Date
				Approved	Howard	08/10/99
				Checked	Lizzy	08/10/99
				Drawn	Tina	08/10/99
				0.0 ± 0.35	0.00 ± 0.20	Angles ± 3'
					UNIT: mm	

Central Components Manufacturing
 440 Lincoln Blvd., Middlesex, New Jersey 08846
 Phone 732 469-5720 888 288-5152 Fax 732 469-1919

Part No.: **DSD15-MF-B-0204S**

Description: D-subminiature connector, dual port, stacked, 15-pin male over 15-pin female, rear boardlocks only