

**SPECIFICATIONS:**  
 Current Rating: 3 Amps  
 Insulation Resistance: 1000 Megohms Min  
 Contact Resistance: 30 Milliohms Max.  
 Withstanding: AC 500V  
 Operating Temp: -55C to +105C

Series	Type	PCB Mounting Options	Mounting/Face Options	Special Options
DSXX	XR	X (See diagrams pg. 2)	X (See diagrams pg. 3)	XX
D-sub connector XX=Sockets 09, 15, 25, 37	MR=Male FR=Female	1=Wraparound ground straps with screw holes 2=Top side only ground straps with #4-40 threaded screw holes 3=2 Prong Board Locks 34=4 Prong Board Locks 4=Top side only ground straps with screw holes	A=#4-40 fixed hex jack screws AR=#4-40 Fixed Round Jack Screws B=#4-40 threaded inserts C=#4-40 threaded inserts w/ jack-screws installed D=.120" non-threaded through holes	[blank]=None XXGD= gold plate XX=Flash if blank, 3,5,10,15 FF=Ferrite filter installed

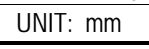
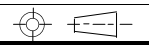
**RoHS compliant**

Rev.	Description	Date	Approved	Drawing	Name	Date
				Approved	Howard	06/26/05
				Checked	Lizzy	06/26/05
				Drawn	Tina	06/26/05
				0.0 ± 0.35	0.00 ± 0.20	Angles ± 3'
				UNIT: mm		

**Central Components Manufacturing**  
 440 Lincoln Blvd., Middlesex, New Jersey 08846  
 Phone 732 469-5720 888 288-5152 Fax 732 469-1919

Part No.: **DS25-FR-3-AR-GD**

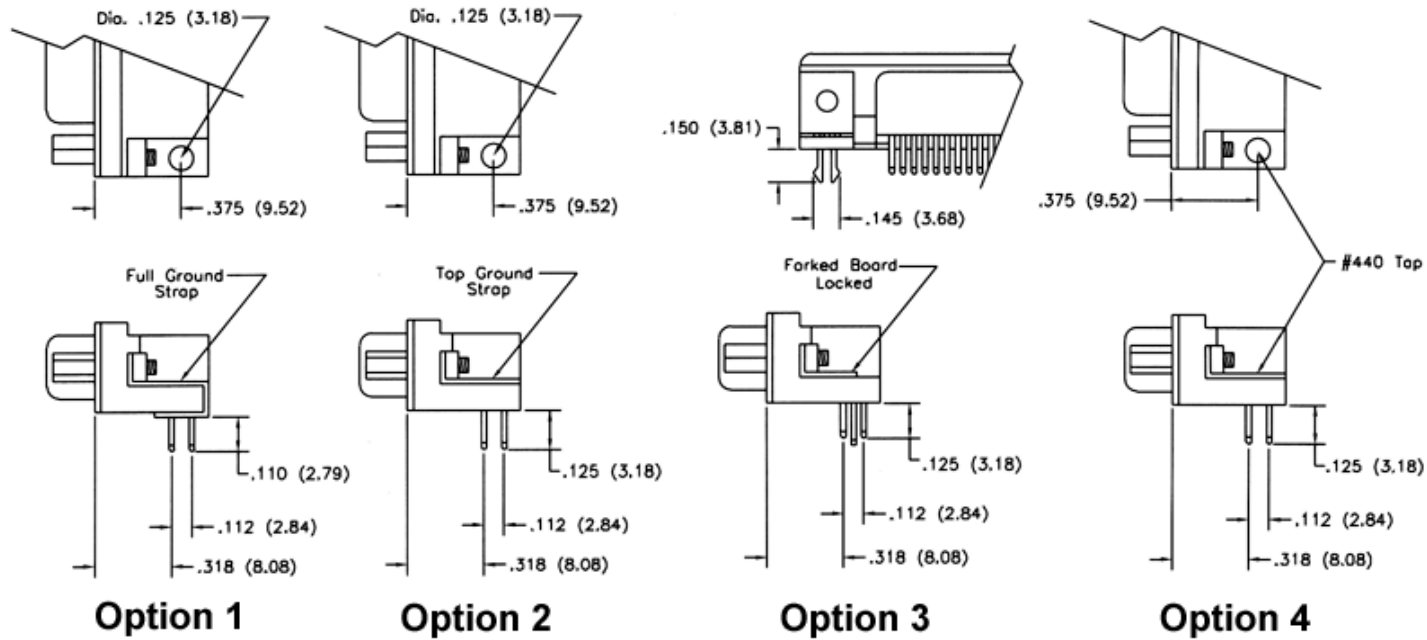
Description: D-Sub 25F 90D-DIP



Angles ± 3'

UNIT: mm

## PC Board Mounting Options



**Option 1**

**Option 2**

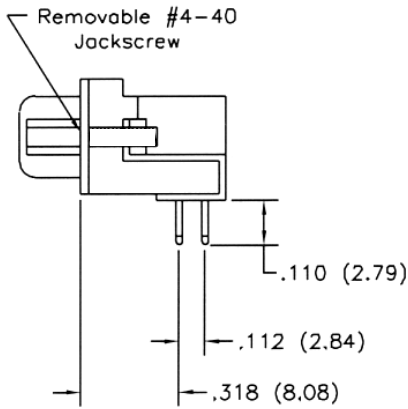
**Option 3**

**Option 4**

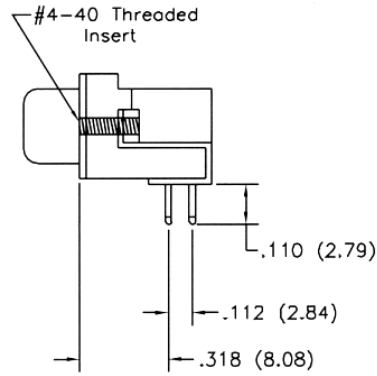
RoHS compliant

Rev.	Description	Date	Approved	Drawing	Name	Date
				Approved	Howard	06/26/05
				Checked	Lizzy	06/26/05
				Drawn	Tina	06/26/05
				0.0 ± 0.35	0.00 ± 0.20	Angles ± 3'
						UNIT: mm
						<b>Central Components Manufacturing</b> 440 Lincoln Blvd., Middlesex, New Jersey 08846 Phone 732 469-5720 888 288-5152 Fax 732 469-1919
						Part No.: <b>DS25-FR-3-AR-GD</b>
						Description: D-Sub 25F 90D-DIP

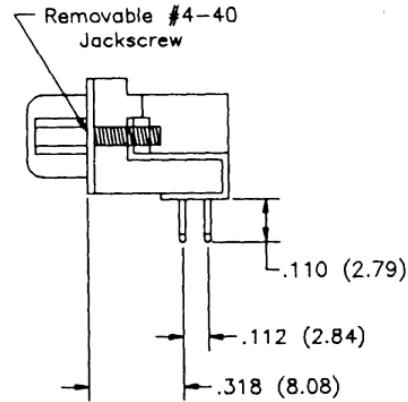
## Mounting/Face Options



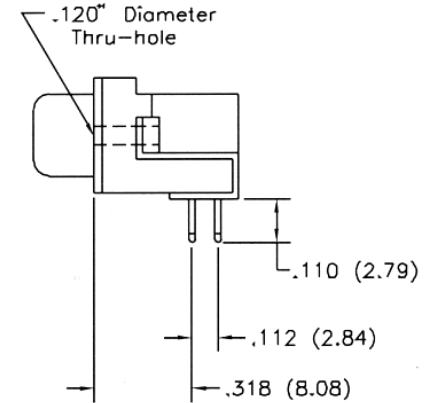
**Option A**



**Option B**

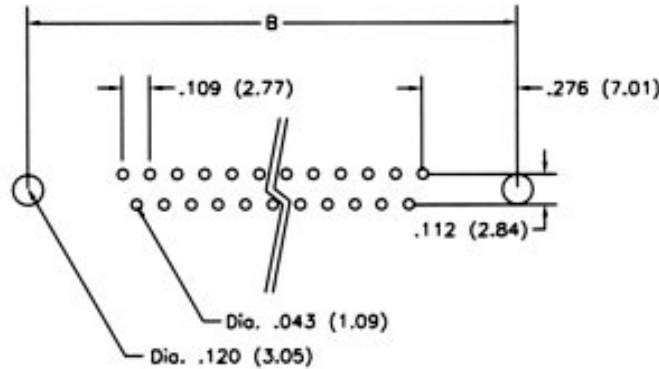


**Option C**



**Option D**

## PC Board Options



RoHS compliant

Rev.	Description	Date	Approved	Drawing	Name	Date	<b>Central Components Manufacturing</b> 440 Lincoln Blvd., Middlesex, New Jersey 08846 Phone 732 469-5720 888 288-5152 Fax 732 469-1919
				Approved	Howard	06/26/05	
				Checked	Lizzy	06/26/05	
				Drawn	Tina	06/26/05	
				0.0 ± 0.35    0.00 ± 0.20    Angles ± 3'			Part No.: <b>DS25-FR-3-AR-GD</b> Description: D-Sub 25F 90D-DIP
				UNIT: mm			