

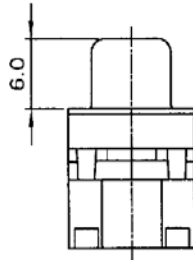
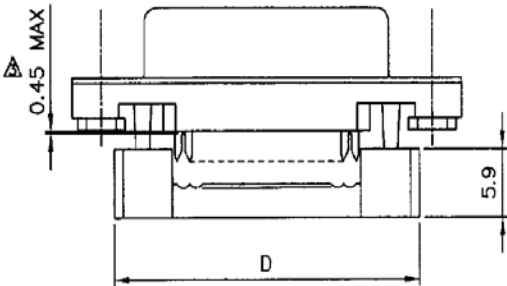
PARTS DIMENSION TABLE

parts no.	DIM. g	DIM. b	inner thread	outer thread
B	4.8	11.8	4#40	4#40
D	5.8	12.0	4#40	4#40
F	4.8	11.8	M3	M3

4#40 Thread or M3 Thread

SPECIFICATIONS

- Current rating: 3 amps
- Voltage rating: 250VDC
- Contact material: Copper Alloy
- Contact plating: Gold or selective gold over nickel
- Contact resistance: 15 milliohms max.
- Insulator material: Thermal Plastic, UL94V-0
- Insulator resistance: 3,000 megohms min.
- Shell material: Steel
- Rivet Boardlock: Copper Alloy
- Withstanding: 1,000 VAC for 1 min.
- Temperature range: -55°C to +105°C



Dimensions: mm				
Pos.	A	B	C	D
9F	16.30	25.00	30.80	22.40
15F	24.60	33.30	39.20	30.80
25F	38.30	47.10	53.10	44.50
37F	54.80	63.50	69.40	61.40



Series	Type	Shell	Mounting face	Plating	Options
DSXX	XFC	X	XX	XX	XX
D-Sub connector XX=Pins 09, 15, 25, 37	MFC=Male plug FFC=Female socket	M=Metal Tin Plated P=Plastic	01=.130" thru hole 02Y=#4-40 threaded inserts 03Y=M3 Threaded Insert Y=Jackscrew (see chart)	Blank=Selective Gold Flash SGXX=Selective Gold XX:5,10,15,30	[blank]=None 30GD=30µ" gold BL=Blue insulator GY=Gray insulator

RoHS compliant

Rev.	Description	Date	Approved	Drawing	Name	Date
				Approved	Howard	11/30/05
				Checked	Lizzy	11/30/05
				Drawn	Tina	11/30/05
				0.0 ± 0.35	0.00 ± 0.20	Angles ± 3'
				UNIT: mm		

Central Components Manufacturing
 440 Lincoln Blvd., Middlesex, New Jersey 08846
 Phone 732 469-5720 888 288-5152 Fax 732 469-1919

Part No.: **DS15-FFC-M-02Y-XX-XX**

Description: DS-subminiature connector, IDC termination, female socket