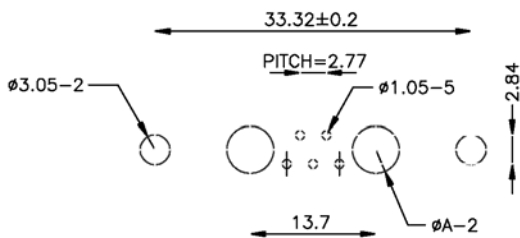


PCB LAYOUT



SPECIFICATIONS

- Voltage rating: 300 volts min. @ 50Hz.
- Current rating: 5 amps (signal), 10-40 amps (power)
- Signal contact material: Brass
- Signal contact plating: Gold flash over nickel (15µ" or 30µ")
- Power contact material: Brass
- Power contact plating: Gold flash over nickel (15µ" or 30µ")
- Contact resistance: 10 milliohms max.
- Insulator material: PBT+30% glass fiber (standard)
High-temperature PA-6T (Nylon-6T) (optional)
- Insulator resistance: 5,000 megohms min.
- Withstanding: 1,000VAC for 1 min.
- Shell material: Steel
- Shell plating: Tin over nickel over zinc
- Board-lock material: Brass
- Board-lock plating: Tin or nickel
- Jackscrew material: Brass
- Jackscrew plating: Nickel
- Operating temperature: -50°C to +105°C (PBT standard)
-50°C to +267°C (PA-6T, hi-temp)

RoHS compliant

Rev.	Description	Date	Approved	Drawing	Name	Date
				Approved	Howard	09/24/07
				Checked	Lizzy	09/24/07
				Drawn	Tina	09/24/07
				0.0 ± 0.35	0.00 ± 0.20	Angles ± 3'
					UNIT: mm	

Central Components Manufacturing
 440 Lincoln Blvd., Middlesex, New Jersey 08846
 Phone 732 469-5720 888 288-5152 Fax 732 469-1919

Part No.: **DS-P7W2PBTG20A-X7J**

Description: D-sub connector, combination power PCB, straight type, 7W2 male with X7J option