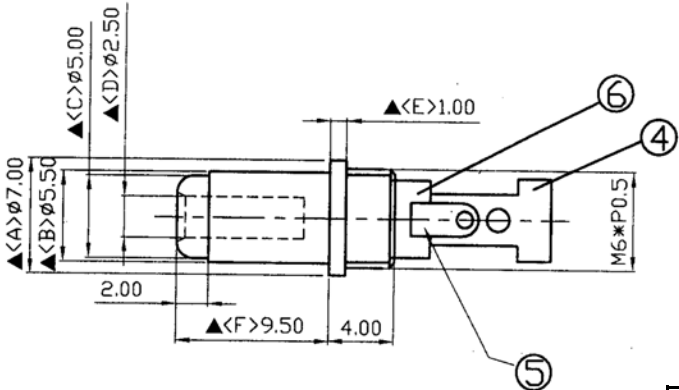
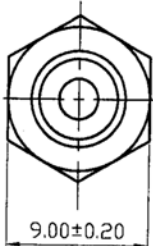
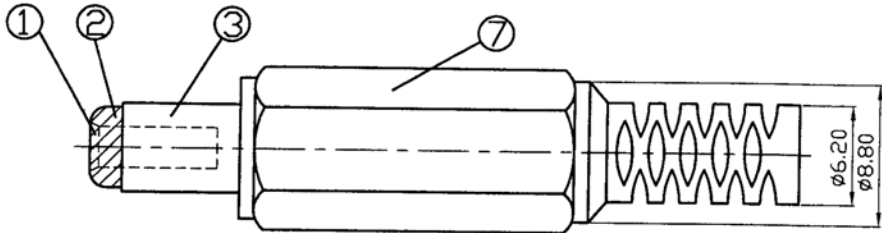


**SPECIFICATIONS**

Contact Resistance: 30mΩ max  
 Insulation Resistance: 100MΩ min.at DC 500V  
 Withstanding: AC 500V for one minute



Item	Name	Material	Finish
1	Inner Barrel	Brass	Nickel
2	Insulator Ring	ABS	Black
3	Outer Sleeve	Brass	Nickel
4	Insulator	PA66+30%	Blue
5	Terminal	Brass	Nickel
6	Ground Terminal	Brass	Nickel
7	Housing	ABS	Black

Series	Type	Hole Size	Handle
DCP	D601	B	P
DC Plug	D601 Type	B=2.50	P=Premolded N=None

RoHS compliant

Rev.	Description	Date	Approved	Drawing	Name	Date
				Approved	Howard	03/03/09
				Checked	Lizzy	03/03/09
				Drawn	Tina	03/03/09
				0.0 ± 0.35	0.00 ± 0.20	Angles ± 3'

**Central Components Manufacturing**  
 440 Lincoln Blvd., Middlesex, New Jersey 08846  
 Phone 732 469-5720 888 288-5152 Fax 732 469-1919

Part No.: **DCP-D601-B-P**

Description 2.5 DC Plug

UNIT: mm