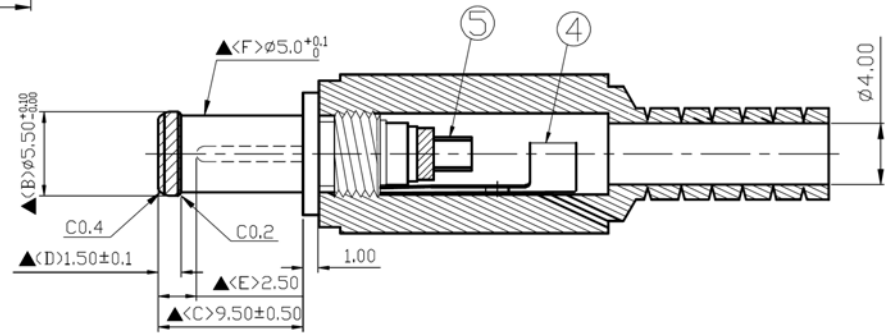


SPECIFICATIONS
 Contact Resistance: 30mΩ max
 Insulation Resistance: 100MΩ min. at DC16V 6A
 Withstanding: AC 500V for 1 minute



Item	Name	Material	Finish
1	Insulator Ring	POM	Yellow
2	Outer Sleeve	Brass	Nickel Plated
3	Housing	TPR	Black Color
4	Ground Terminal	Brass	Nickel Plated
5	Terminal	Brass	Nickel Plated

Series	Type	Hole Size		Handle
DCP	B9010	X		X
DC Plug	B9010 Type	N=0.70 C=1.00 D=1.30 P=1.70	M=2.35 B=2.50 R=3.00 A=2.00 E=5.00	N=None T=TPR

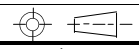
RoHS compliant

Rev.	Description	Date	Approved	Drawing	Name	Date
				Approved	Howard	07/28/14
				Checked	Lizzy	07/28/14
				Drawn	Tina	07/28/14
				0.0 ± 0.35	0.00 ± 0.20	Angles ± 3'

Central Components Manufacturing
 440 Lincoln Blvd., Middlesex, New Jersey 08846
 Phone 732 469-5720 888 288-5152 Fax 732 469-1919

Part No.: **DCP-B9010-E-T**

Description DC Plug, 5.0 x 1.0



UNIT: mm