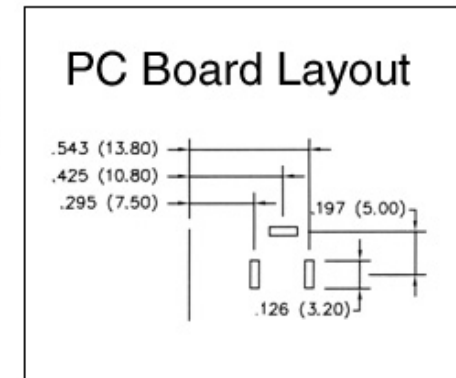
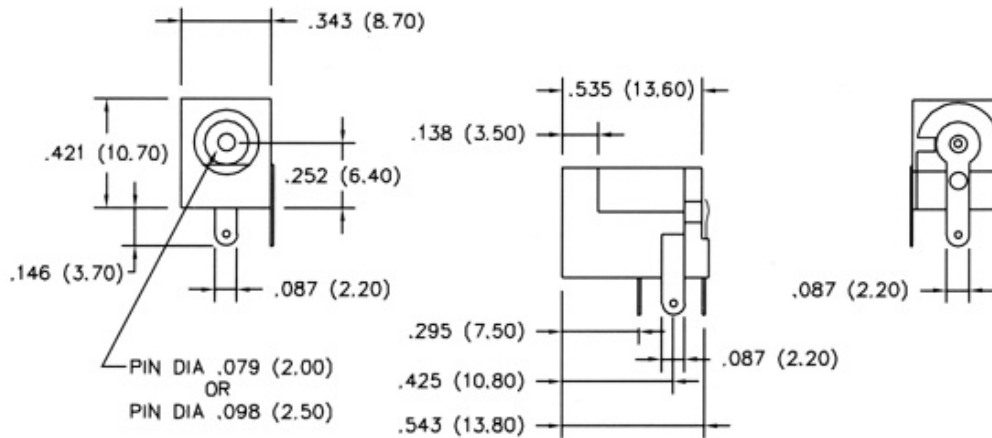


SPECIFICATIONS

Insulator: PBT Glass Reinforced UL94V-0
 Contacts: Phosphor Bronze
 Contact Plating: Silver over brass
 Operating Voltage: 250 VAC max.
 Current Rating: 1 amp max.
 Contact Resistance: 30 milliohms max.
 Insulation Resistance: 5000 megohms min.
 Withstanding Voltage: 1000VAC for 1 min.
 Cycle Life: 5000 insertion/separation cycles
 Operating Temp: -55C to +125C

Series	Mold Type	Center Pin	Plating
DCJ	XX	X	TN
Direct Current Power Jack	1-4	A=2.0mm B=2.50mm C=1.00mm D=1.30mm	TN= Tin Contact Plating

DCJ-01



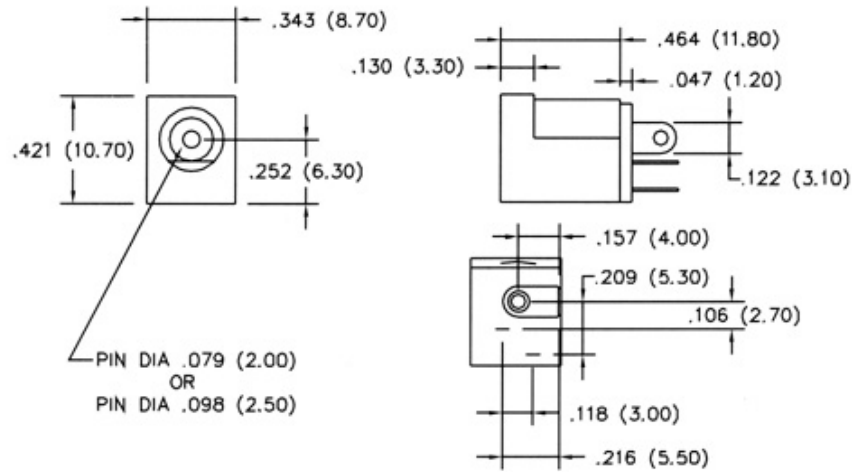
Rev.	Description	Date	Approved	Drawing	Name	Date
				Approved	Howard	08/30/05
				Checked	Lizzy	08/30/05
				Drawn	Tina	08/30/05
				0.0 ± 0.35	0.00 ± 0.20	Angles ± 3'
				UNIT: mm		

Central Components Manufacturing
 440 Lincoln Blvd., Middlesex, New Jersey 08846
 Phone 732 469-5720 888 288-5152 Fax 732 469-1919

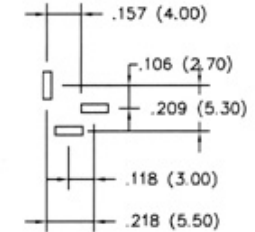
Part No.: **DCJ-XX-X-XX**

Description: DC Power Jacks

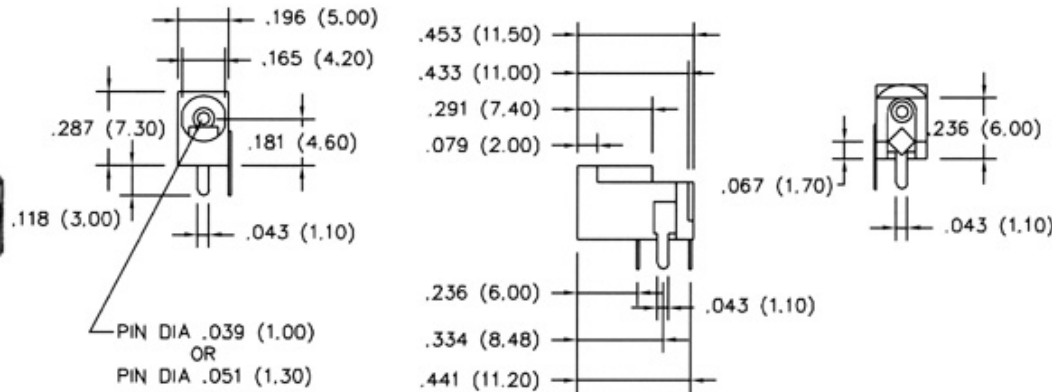
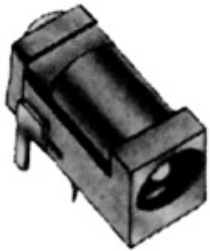
DCJ-02



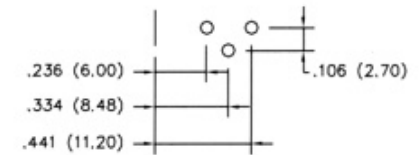
PC Board Layout



DCJ-03



PC Board Layout



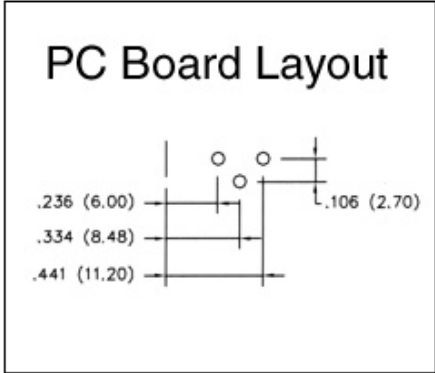
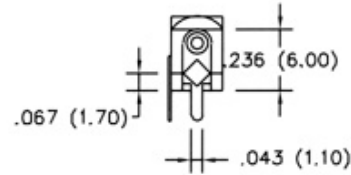
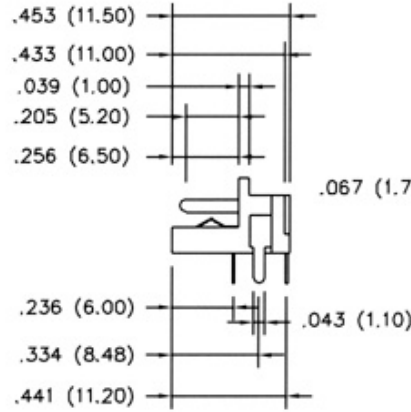
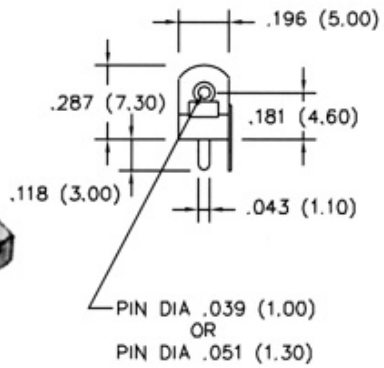
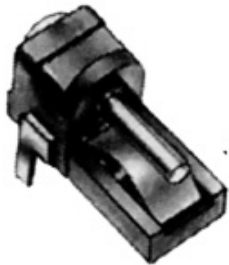
Rev.	Description	Date	Approved	Drawing	Name	Date
				Approved	Howard	08/30/05
				Checked	Lizzy	08/30/05
				Drawn	Tina	08/30/05
				0.0 ± 0.35	0.00 ± 0.20	Angles ± 3'
				UNIT: mm		

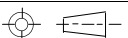
Central Components Manufacturing
 440 Lincoln Blvd., Middlesex, New Jersey 08846
 Phone 732 469-5720 888 288-5152 Fax 732 469-1919


Part No.: **DCJ-XX-X-XX**

Description: DC Power Jacks

DCJ-04



Rev.	Description	Date	Approved	Drawing	Name	Date
				Approved	Howard	08/30/05
				Checked	Lizzy	08/30/05
				Drawn	Tina	08/30/05
				0.0 ± 0.35	0.00 ± 0.20	Angles ± 3'
				 UNIT: mm		


Central Components Manufacturing
 440 Lincoln Blvd., Middlesex, New Jersey 08846
 Phone 732 469-5720 888 288-5152 Fax 732 469-1919

Part No.: **DCJ-XX-X-XX**
 Description: DC Power Jacks