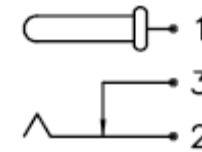
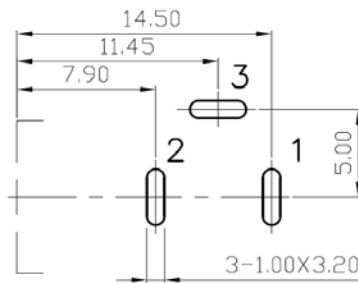


SCHEMATIC



SPECIFICATIONS

Contact Resistance: 30mΩ max
 Current Rating: 5.0A Max, 24V DC
 Insulation Resistance: 100MΩ min. at DC 500V
 Withstanding Voltage: AC 500V for 1 minute
 Operating Temp: -50C to +125C



Pin Hole Layout
(Jack Bottom View)

Item	Name	Material	Finish
1	Pin Terminal	0.4T Brass	Silver Plated
2	Sleeve Spring	0.2T Phos. Bronze	Silver Plated
3	Break Terminal	0.4T Brass	Silver Plated
4	Pin (2.50)	Copper	Nickel Plated
5	Housing	PA9T	Black Color
6	Cover	PA9T	Black Color

Series	Style	Pin Size	Circuit	Options
DCJ	D442	X	X	X
DC power jack	Side entry thru-hole	A=2.0mm B=2.5mm	[blank]=Closed N=Open	[blank]=None KT=Kinked tail V=Top groove HT=High Temp

Rev.	Description	Date	Approved	Drawing	Name	Date
				Approved	Howard	06/25/15
				Checked	Lizzy	06/25/15
				Drawn	Tina	06/25/15
				0.0 ± 0.35	0.00 ± 0.20	Angles ± 3'
				UNIT: mm		

Central Components Manufacturing
 440 Lincoln Blvd., Middlesex, New Jersey 08846
 Phone 732 469-5720 888 288-5152 Fax 732 469-1919

Part No.: **DCJ-D442-B-X-HT**

Description: Locking DC Power Jack, 2.5mm Pin, High Temp