

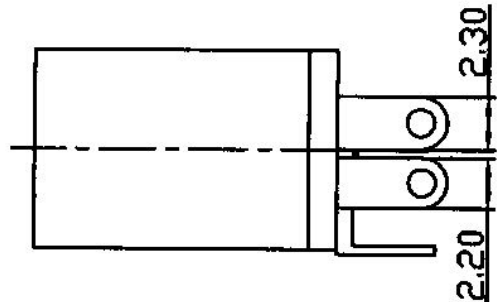
Pin Hole Layout
(Jack Bottom View)

SPECIFICATIONS

Contact resistance: 30 milliohms max.

Insulation resistance: 100 megohms min.

Withstanding: 500VAC for 1 min.



Item	Name	Material	Finish
1	Pin terminal	Brass, 0.4T	Silver
2	Sleeve spring	Phosphor bronze, 0.2T	Silver
3	Break terminal	Brass, 0.4T	Silver
4	Housing	PBT+30% glass fiber	Black
5	Cover	Bakelite	Black
6	Pin (Ø2.0)	Copper	Nickel

Series	Style	Pin Size	Terminal Plating
DCJ	D435	X	X
DC power jack	Side entry thru-hole	A=2.0mm B=2.5mm	S=Silver (std) T=Tin

RoHS compliant

Rev.	Description	Date	Approved	Drawing	Name	Date
				Approved	Howard	8/10/99
				Checked	Lizzy	8/10/99
				Drawn	Tina	8/10/99
				0.0 ± 0.35	0.00 ± 0.20	Angles ± 3'
				UNIT: mm		

Central Components Manufacturing
 440 Lincoln Blvd., Middlesex, New Jersey 08846
 Phone 732 469-5720 888 288-5152 Fax 732 469-1919

Part No.: **DCJ-D435-X-X**

Description: DC power jack