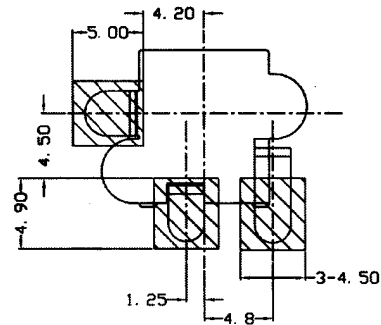


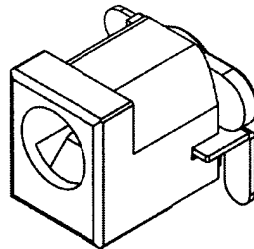
COPLANARITY

	PIN#	DIA.	TOLER.
	3		
	A	2.00	+0.0 -0.1
	B	2.50	+0.0 -0.1

SCHMATIC



Recommended PAD Layout  
[TOP VIEW]



Item	Name	Material	Finish
1	Housing	LCP	UL94V-0
2	Bottom cover	PA9T	UL94V-0
3	Center pin	Copper	Nickel
4	Spring terminal	PBS	Silver 30µ"
5	Shunt terminal	Brass	Silver 40µ"
6	Pin terminal	Brass	Silver 40µ"

RoHS compliant

Rev.	Description	Date	Approved	Drawing	Name	Date
				Approved	Howard	08/10/99
				Checked	Lizzy	08/10/99
				Drawn	Tina	08/10/99
				0.0 ± 0.35	0.00 ± 0.20	Angles ± 3'
					UNIT: mm	

**Central Components Manufacturing**  
 440 Lincoln Blvd., Middlesex, New Jersey 08846  
 Phone 732 469-5720 888 288-5152 Fax 732 469-1919

Part No.: **DCJ-AJ240X-SMT**

Description: DC power jack, vertical surface mount