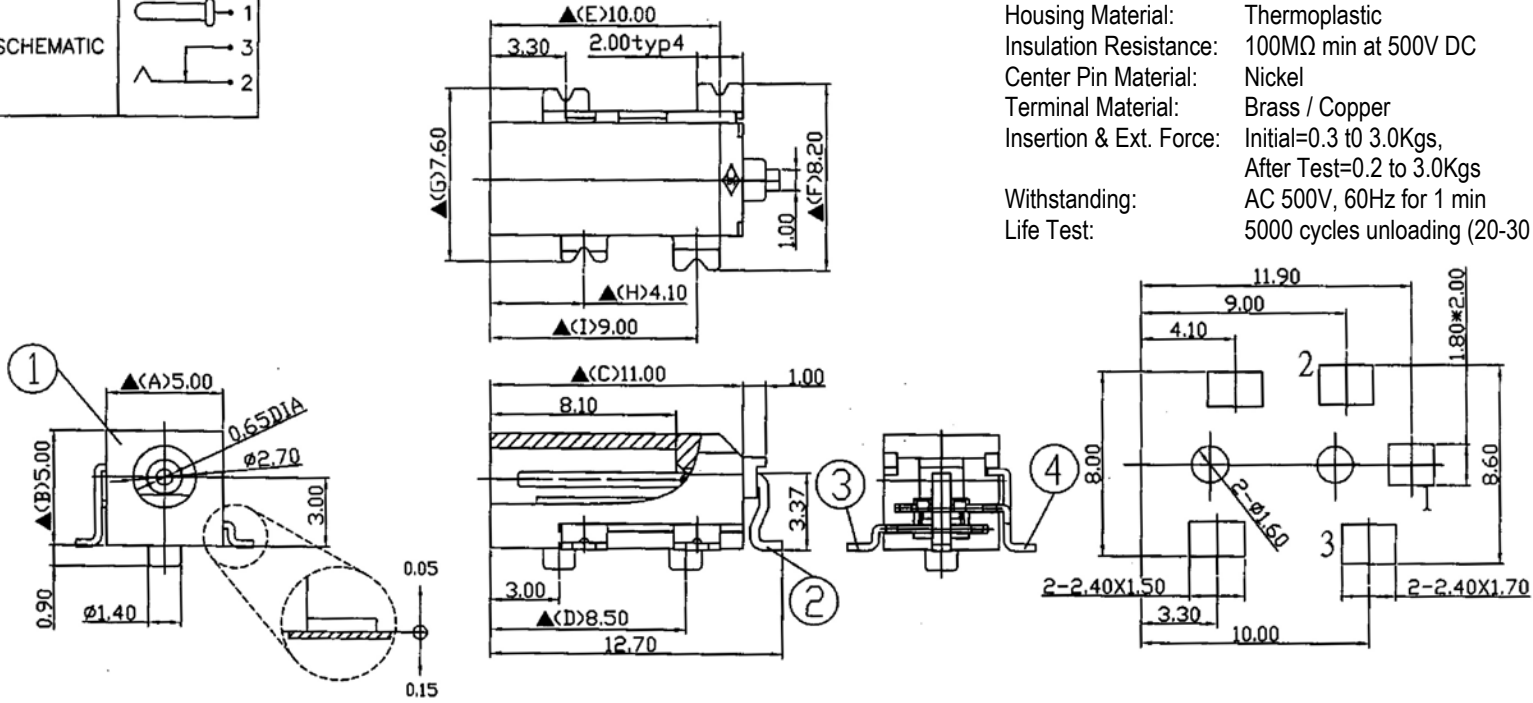


**SPECIFICATIONS**

Voltage Rating: 0.5A 16V DC  
 Contact Resistance: 30mΩ max at AC 100mA max 1KHz  
 Housing Material: Thermoplastic  
 Insulation Resistance: 100MΩ min at 500V DC  
 Center Pin Material: Nickel  
 Terminal Material: Brass / Copper  
 Insertion & Ext. Force: Initial=0.3 to 3.0Kgs,  
 After Test=0.2 to 3.0Kgs  
 Withstanding: AC 500V, 60Hz for 1 min  
 Life Test: 5000 cycles unloading (20-30 cycle/min)



Pin Hole Layout  
(Jack Bottom View)

Series	Style	Center Pin	Schematic	Plating	Options
DCJ	470	H	A	S	X
DC Power Jack	470=Side Entry Surface Mount	H=0.65mm	A is normally closed	S=Silver (std)	Blank=None

RoHS compliant

Rev.	Description	Date	Approved	Drawing	Name	Date
				Approved	Howard	08/19/08
				Checked	Lizzy	08/19/08
				Drawn	Tina	08/19/08
				0.0 ± 0.35	0.00 ± 0.20	Angles ± 3'
				UNIT: mm		

**Central Components Manufacturing**  
 440 Lincoln Blvd., Middlesex, New Jersey 08846  
 Phone 732 469-5720 888 288-5152 Fax 732 469-1919

Part No.: **DCJ-470-H-A-S**

Description: DC Power Jack