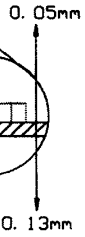
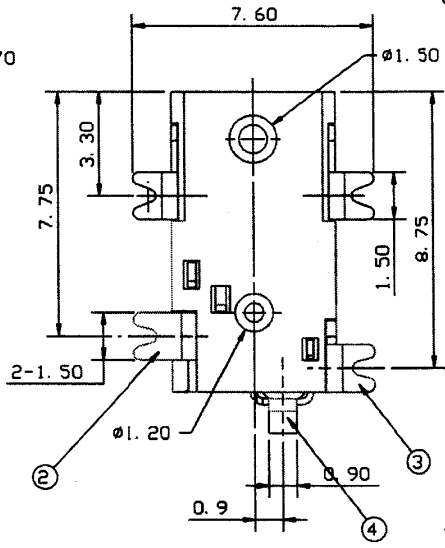


Recommended Pads Layout
<Component Side>



Item	Name	Material	Finish
1	Housing	LCP	Gold
2	Spring	Ti-Cu	Gold
3	Shunt	Brass	Gold
4	Pin	PBW	Gold
5	Shield	Brass	Gold
6	Stopper	Brass	Gold

RoHS compliant

Rev.	Description	Date	Approved	Drawing	Name	Date
				Approved	Howard	08/28/06
				Checked	Lizzy	08/28/06
				Drawn	Tina	08/28/06
				0.0 ± 0.35	0.00 ± 0.20	Angles ± 3'
						UNIT: mm

Central Components Manufacturing
 440 Lincoln Blvd., Middlesex, New Jersey 08846
 Phone 732 469-5720 888 288-5152 Fax 732 469-1919

Part No.: **DCJ-239A-S-SMT**

Description: Power jack, 0.065", surface mount, very low profile