

SPECIFICATIONS

Pin to Pin Voltage: 1K V Min
 Pin to Shell Voltage: 1K V Min
 Shell Material: Steel, Tin or Nickel Plated
 Insulator Material: Thermoplastic, Black UL94V-0
 Insulation Resistance: 5K Mega-Ohms Min

Series	Configuration	Type	Mounting	Plating	Options
DC	XYWZ	XYZ	X	XX	XX
Combination Pin DSub	X: P = Power Connexor D = Coax Connectopr YY = Total Positions Z = Total Power / Coax Connectors	X: M = Male F = Female Y: S = Straight R = R/A Z: C = Crimp Contacts D = Solder Cup Contacts	A = 4-40 Fixed Jack Screws B = 4-40 Threaded Inserts C = 4-40 Inserts & Jack Screws D = Screw holes (thru holes) BL = Board Locks	GD = Gold Flash GD15 = 15µ" Gold GD30 = 30µ" Gold TN= Tin	Blank = None 10 = 10AMP 20 = 20AMP 30 = 30AMP 40 = 40AMP

RoHS compliant

Rev.	Description	Date	Approved	Drawing	Name	Date
				Approved	Howard	01/21/08
				Checked	Lizzy	01/21/08
				Drawn	Tina	01/21/08
				0.0 ± 0.35	0.00 ± 0.20	Angles ± 3'
				UNIT: mm		

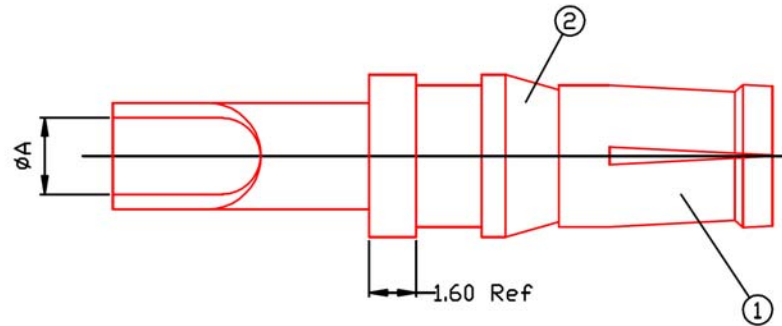
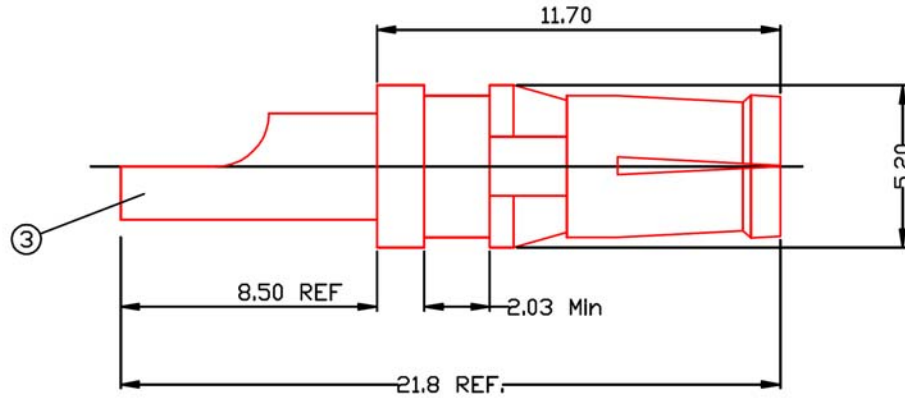
Central Components Manufacturing
 440 Lincoln Blvd., Middlesex, New Jersey 08846
 Phone 732 469-5720 888 288-5152 Fax 732 469-1919

Part No.: **DC-D8W8-FSD-D-XX-XX**

Description: D-Sub Combo 8W8 Female Socket

SPECIFICATIONS

Mating Area: Brass, Gold Flash, 15 or 30u" Plating over Nickel
 Ring Clip: Brass, Nickel Plated
 Solder Tail: Brass, Gold Flash or Tin Plated over Nickel



Rev.	Description	Date	Approved	Drawing	Name	Date
				Approved	Howard	01/21/08
				Checked	Lizzy	01/21/08
				Drawn	Tina	01/21/08
				0.0 ± 0.35	0.00 ± 0.20	Angles ± 3'
					UNIT: mm	

Central Components Manufacturing
 440 Lincoln Blvd., Middlesex, New Jersey 08846
 Phone 732 469-5720 888 288-5152 Fax 732 469-1919

Part No.: **DC-D8W8-FSD-D-XX-XX**

Description: D-Sub Combo 8W8 Female Socket