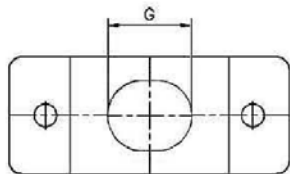


Item	Name	Material	Finish
1	Plastic Hood	PP	Plastic, Black
2	Thumb Screw	Steel	Nickel, Black
3	Lock Screw	Steel	Nickel, Black
4	Clamp Black	PP	Black



Dimensions									
Pos.	A	B	C	D	E	F	G	H	I
09	38.80	24.99	12.00	33.30	24.60	14.80	8.50	12.00	17.00
15	42.20	33.32	16.00	32.80	23.60	14.80	10.50	16.00	21.00
25	56.30	47.04	16.00	36.50	25.60	14.80	11.00	16.00	21.00
37	72.70	63.50	16.00	39.20	26.40	15.00	11.00	16.00	21.00
50	70.10	61.11	16.00	41.20	26.40	18.50	12.00	16.00	21.00

Series	Type	Material	Hardware
DBSXX	R121	XX	XX
D-Sub Backshell	R121 Style	PG=Gray Plastic PB=Black Plastic PI=Ivory Plastic PN=Nickle Plated Plastic	SS=Standard Screw MS=Metal Thumb Screw

RoHS compliant

Rev.	Description	Date	Approved	Drawing	Name	Date
				Approved	Howard	02/28/05
				Checked	Lizzy	02/28/05
				Drawn	Tina	02/28/05
				0.0 ± 0.35	0.00 ± 0.20	Angles ± 3'
				UNIT: mm		

**Central Components Manufacturing**  
 440 Lincoln Blvd., Middlesex, New Jersey 08846  
 Phone 732 469-5720 888 288-5152 Fax 732 469-1919

Part No.: **DBSXX-R121-PB-MS**

Description: 37 Position Plastic D-Sub Backshell