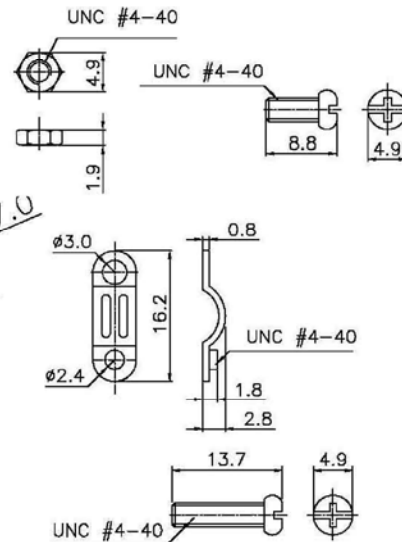
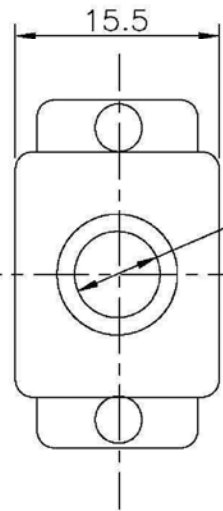
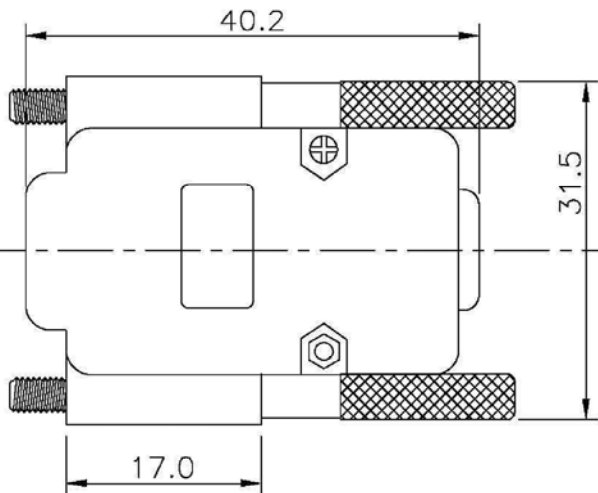


**SPECIFICATIONS**

Material:  
 Hood: ABS Plastic  
 Thumbscrew: Metal  
 Hood Plating:  
 R106-09GT: Gray ABS Plastic  
 R106-09CT: Nickel Plated



Series	Type	Hood	Hardware	Option
DBS09	106	XX	XX	X
9 Pos. back shell	Type 106	PG=Gray Plastic PB=Black Plastic PC=Metalized Plastic PE=Beige Plastic	SS=Standard Screw TS=Metal Thumb Screw PS=Plastic Thumb Screw	Blank=7mm Entrance B=8mm Entrance

RoHS compliant

Rev.	Description	Date	Approved	Drawing	Name	Date
				Approved	Howard	10/09/08
				Checked	Lizzy	10/09/08
				Drawn	Tina	10/09/08
				0.0 ± 0.35	0.00 ± 0.20	Angles ± 3'
				UNIT: mm		

**Central Components Manufacturing**  
 440 Lincoln Blvd., Middlesex, New Jersey 08846  
 Phone 732 469-5720 888 288-5152 Fax 732 469-1919

Part No.: **DBS09-106-XX-TS**

Description: D-Sub backshell