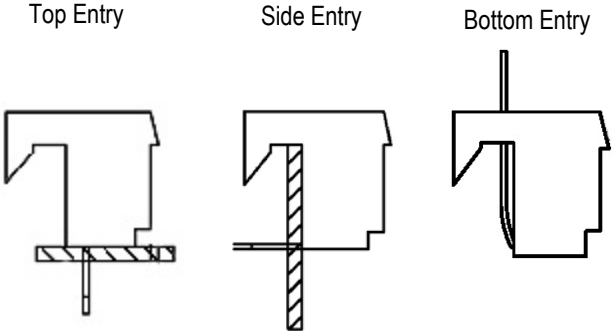


SPECIFICATIONS

Current rating: 2.5 Amp
 Voltage rating: 250VAC max.
 Contact Material: Brass
 Contact resistance: 20m Ω max.
 Housing material: Nylon, UL94V-2
 Insulation resistance: 1,000 M Ω
 Withstanding: 1500V AC/min
 Temperature range: 0°C to +75°C

Dimensions mm					
Pin	A	B	Pin	A	B
02	2.54	5.10	16	38.10	40.66
03	5.08	7.64	17	40.64	43.20
04	7.62	10.18	18	43.18	45.74
05	10.16	12.72	19	45.72	48.28
06	12.70	15.26	20	48.26	50.82
07	15.24	17.80	21	50.80	53.36
08	17.78	20.34	22	53.34	55.90
09	20.32	22.88	23	55.88	58.44
10	22.86	25.42	24	58.42	60.98
11	25.40	27.96	25	60.96	63.52
12	27.94	30.50	26	63.50	66.06
13	30.48	33.04	27	66.04	68.60
14	33.02	35.58	28	68.58	71.14
15	35.56	38.12	29	71.12	73.68



Series	Pitch	Type	Mounting	Positions	Color	Plating
DBHR-A	X	X	X	XX	XX	XX
DBHR receptacle with board hooks	1=.100" 2=.156"	T=Top S=Side B=Bottom	Blank=None H=Hook R=Locking Ramp HR=Hook & Ramp	2-29	BK=Black WT=White	TN=Tin GD=Gold

RoHS compliant

Rev.	Description	Date	Approved	Drawing	Name	Date
				Approved	Howard	10/28/08
				Checked	Lizzy	10/28/08
				Drawn	Tina	10/28/08
				0.0 \pm 0.35	0.00 \pm 0.20	Angles \pm 3'
				UNIT: mm		

Central Components Manufacturing
 440 Lincoln Blvd., Middlesex, New Jersey 08846
 Phone 732 469-5720 888 288-5152 Fax 732 469-1919
 Part No.: **DBHR-A-1-T-H-XX-XX-XX**

Description: 2.54mm P.C.B. Conn. Top Entry