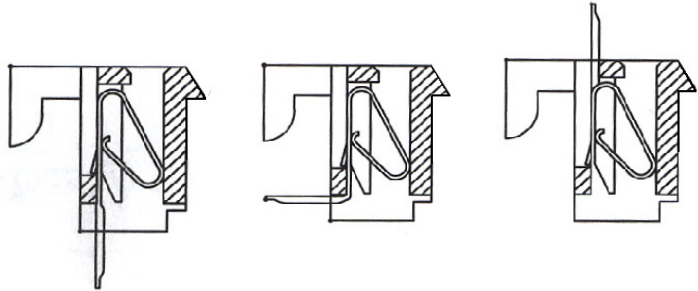


**SPECIFICATIONS**

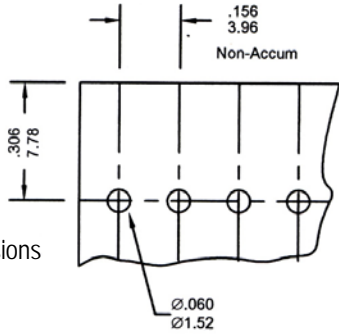
Current rating: 5 amps  
 Voltage rating: 250VAC max.  
 Contact material: Brass  
 Contact plating: Tin 100μ" over nickel 50μ"  
 Contact resistance: 6 milliohms max.  
 Housing material: Nylon, UL94V-2  
 Insulation resistance: 5,000 megohms at 1,500VAC min.  
 Temperature range: 0°C to +75°C

Dimensions		
Pos.	A	B
2	3.96	7.82
3	7.92	11.78
4	11.88	15.74
5	15.84	19.70
6	19.80	23.66
7	23.76	27.62
8	27.72	31.58
9	31.68	35.54
10	35.64	39.50
11	39.60	43.46
12	43.56	47.42
13	47.52	51.38
14	51.48	55.34
15	55.44	59.30
16	59.40	63.26

Top Entry      Side Entry      Bottom Entry



Recommended Hole Dimensions



Series	Pitch	Type	Mounting	Positions	Color	Plating
DBHR	X	X	X	XX	XX	XX
DBHR receptacle with board hooks	1=.100" 2=.156"	T=Top S=Side B=Bottom	Blank=None H=Hook HR=Hook & Ramp R=Locking Ramp (not with L)	2-22	BK=Black WT=White	TN=Tin GD=Gold

RoHS compliant

Rev.	Description	Date	Approved	Drawing	Name	Date
				Approved	Howard	08/10/99
				Checked	Lizzy	08/10/99
				Drawn	Tina	08/10/99
				0.0 ± 0.35	0.00 ± 0.20	Angles ± 3'
				UNIT: mm		

**Central Components Manufacturing**  
 440 Lincoln Blvd., Middlesex, New Jersey 08846  
 Phone 732 469-5720 888 288-5152 Fax 732 469-1919

Part No.: **DBHR-2-T-HR-15-WT-TN**

Description: PC board connector, 3.96mm pitch