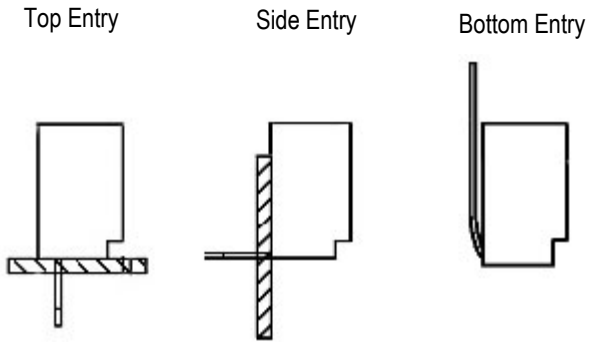
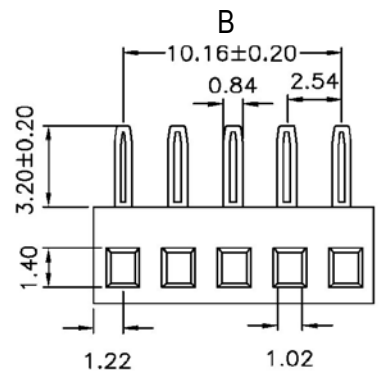
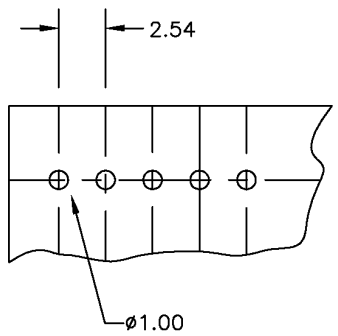


**SPECIFICATIONS**  
 Current rating: 3 Amp  
 Voltage rating: 250VAC max.  
 Contact Material: Brass  
 Contact resistance: 10mΩ max. / 20mΩ max. After environmental testing.  
 Housing material: Nylon, UL94V-0 (1)  
 PC Board Thickness: .063" [1.6mm]  
 Insulation resistance: 5,000 MΩ  
 Withstanding: 1500V AC/min  
 Temperature range: -40°C to +105°C



Dimensions mm					
Pin	A	B	Pin	A	B
02	5.08	2.54	14	35.56	33.02
03	7.62	5.08	15	38.10	35.56
04	12.70	7.62	16	40.64	38.10
05	12.70	12.70	17	43.18	40.64
06	15.24	12.70	18	45.72	43.18
07	17.78	15.24	19	48.26	45.72
08	20.32	17.78	20	50.80	48.26
09	22.86	20.32	21	53.34	50.80
10	25.40	22.86	22	55.88	53.34
11	27.94	25.40	23	58.42	55.88
12	30.48	27.94	24	60.96	58.42
13	33.02	30.48	25	63.50	60.96



Series	Pitch	Type	Mounting	Positions	Color	Plating
DBHR	X	X	X	XX	XX	XX
DBHR receptacle with board hooks	1=.100" 2=.156"	T=Top S=Side B=Bottom	Blank=None H=Hook R=Locking Ramp HR=Hook & Ramp	2-25	BK=Black WT=White	TN=Tin GD=Gold

RoHS compliant

Rev.	Description	Date	Approved	Drawing	Name	Date
				Approved	Howard	01/08/09
				Checked	Lizzy	01/08/09
				Drawn	Tina	01/08/09
				0.0 ± 0.35	0.00 ± 0.20	Angles ± 3'
				UNIT: mm		

**Central Components Manufacturing**  
 440 Lincoln Blvd., Middlesex, New Jersey 08846  
 Phone 732 469-5720 888 288-5152 Fax 732 469-1919

Part No.: **DBHR-1-S-XX-XX-XX**

Description: PC board connector, 2.54mm pitch