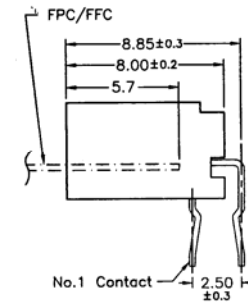
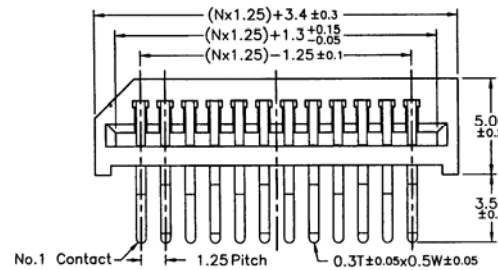
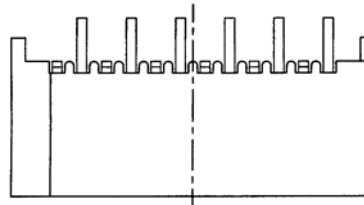
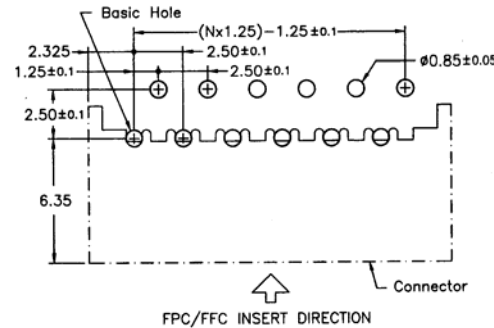


SPECIFICATIONS

Current rating: 1 amp max.
 Voltage rating: 125 volts max.
 Contacts: Phosphor bronze
 Contact plating: Tin
 Insulator: PBT glass filled
 Withstanding: 500VRMS



PCB Layout



RoHS compliant

Rev.	Description	Date	Approved	Drawing	Name	Date
				Approved	Howard	08/10/99
				Checked	Lizzy	08/10/99
				Drawn	Tina	08/10/99
				0.0 ± 0.35	0.00 ± 0.20	Angles ± 3'
				UNIT: mm		

Central Components Manufacturing
 440 Lincoln Blvd., Middlesex, New Jersey 08846
 Phone 732 469-5720 888 288-5152 Fax 732 469-1919

Part No.: **CZF-C-XX-RA**

Description: FPC connector, right angle