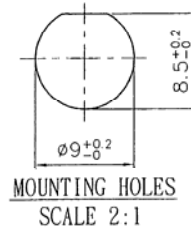
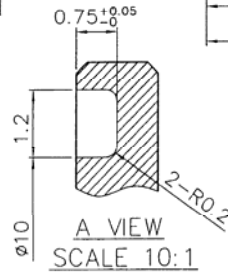


SPECIFICATIONS

Current/Voltage: AC/DC 5V-5mA min.
 AC/DC 125V-3A max.
 Insulation Resistance: 100MΩ min at DC 500V
 Contact Resistance: 40mΩ max. at DC 1A
 Withstanding: AC 500V for 1 minute
 Water Protection: IP67



Item	Name	Material	Finish
1	Nut	ZDC2	Nickel
2	Body	Nylon + 15%GF	
3	O Ring	Rubber	
4	Washer	Copper	Nickel
5	Nut	Copper	Nickel

Series	Type	Version	Body Plating	Positions	Contact Plating
CWP	M8	641MP	N	04	GD
Waterproof Circular Connector	M8=8mm	Male Panel Mount	N=Nickel	04=4	GD=Gold

RoHS compliant

Rev.	Description	Date	Approved	Drawing	Name	Date
				Approved	Howard	06/23/06
				Checked	Lizzy	06/23/06
				Drawn	Tina	06/23/06
				0.0 ± 0.35	0.00 ± 0.20	Angles ± 3°
				UNIT: mm		

Central Components Manufacturing
 440 Lincoln Blvd., Middlesex, New Jersey 08846
 Phone 732 469-5720 888 288-5152 Fax 732 469-1919

Part No.: **CWP-M8-641MP-N-04-GD**

Description: M6 male circular water proof panel mount connector