

SPECIFICATIONS
 Current Rating: 3A
 Voltage Rating: 30V AC rms
 Withstanding Voltage: 100 VAC for 1 minute
 Insulation Resistance: 100 Megaohms min.
 Contact Resistance: 40 Milliohms Max.
 Insertion Force: 5N~20N
 Withdrawal Force: 8N~20N
 Housing Color: LCP Black
 Shell Plating: Nickel
 Operating Temp: -25C to +85C

Series	Type	Style	Version	Contact Plating	Package
CUSB	C31	LN6	1F24RTS	GDXX	TR
USB Connector	Type C 3.1	See Drawing	Single Port Female, 24 Contacts, R/A Through Hole plus SMT	GDXX=Selective Gold XX=Flash if blank, 15, 30u"	TR=Tape & Reel

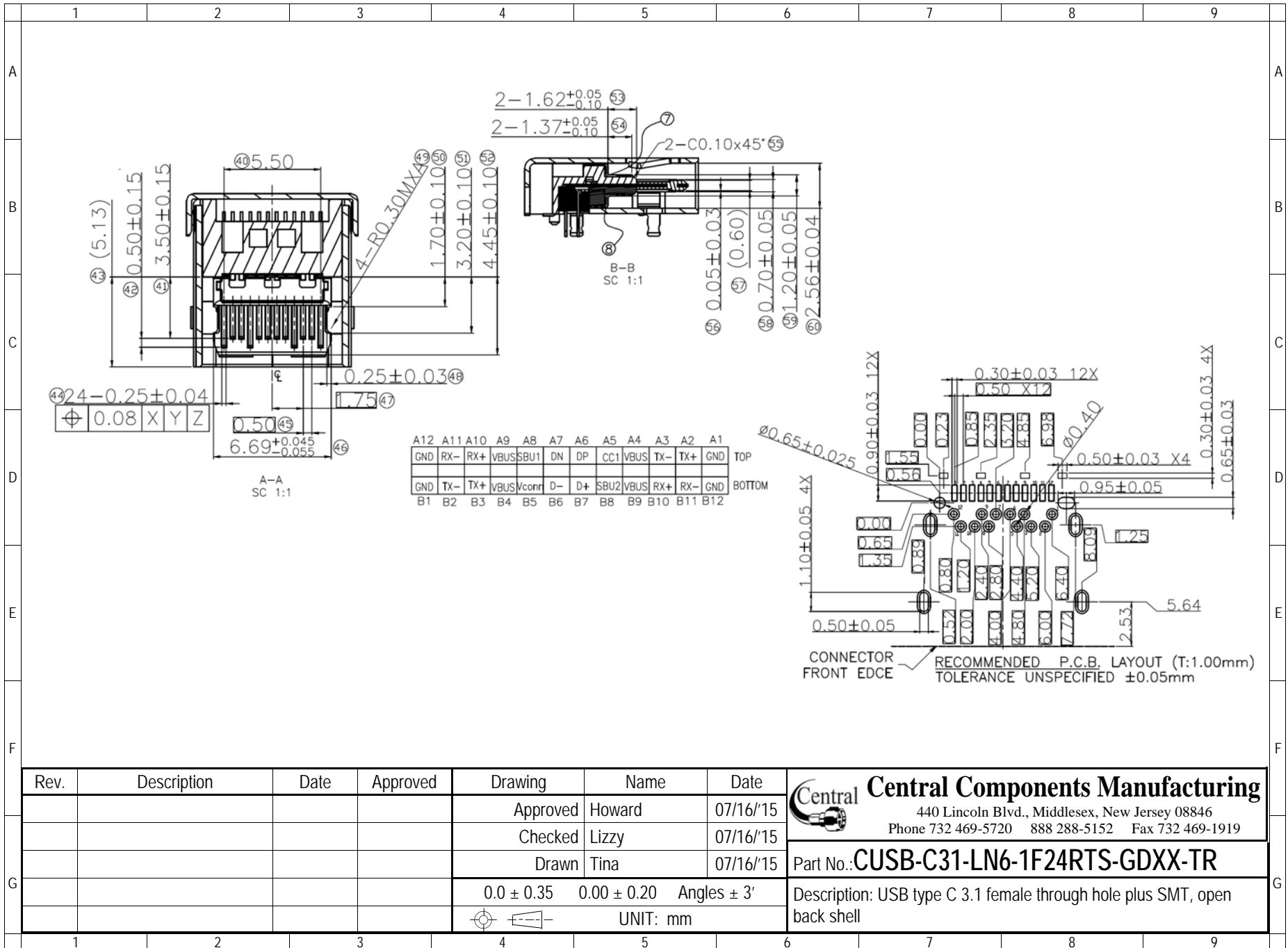
RoHS compliant

Rev.	Description	Date	Approved	Drawing	Name	Date
				Approved	Howard	07/16/15
				Checked	Lizzy	07/16/15
				Drawn	Tina	07/16/15
				0.0 ± 0.35	0.00 ± 0.20	Angles ± 3'
				UNIT: mm		

Central Components Manufacturing
 440 Lincoln Blvd., Middlesex, New Jersey 08846
 Phone 732 469-5720 888 288-5152 Fax 732 469-1919

Part No.: **CUSB-C31-LN6-1F24RTS-GDXX-TR**

Description: USB type C 3.1 female through hole plus SMT, open back shell



Rev.	Description	Date	Approved	Drawing	Name	Date
				Approved	Howard	07/16/15
				Checked	Lizzy	07/16/15
				Drawn	Tina	07/16/15
				0.0 ± 0.35	0.00 ± 0.20	Angles ± 3'
				UNIT: mm		

Central Components Manufacturing
 440 Lincoln Blvd., Middlesex, New Jersey 08846
 Phone 732 469-5720 888 288-5152 Fax 732 469-1919

Part No.: **CUSB-C31-LN6-1F24RTS-GDXX-TR**

Description: USB type C 3.1 female through hole plus SMT, open back shell