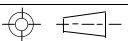


**SPECIFICATIONS**

Current Rating: 5A  
 Insulator: High Temp Plastic UL94V-0  
 Contact: Copper Alloy  
 Shell: Stainless Steel  
 Contact Resistance: 30mohm max  
 Withstanding: 100V RMS  
 Insulation Resistance: 100Mohm min  
 Mating Force: 5-20N  
 Unmating Force: 8-20N  
 Durability: 10000 cycles  
 Terminal Contact: Gold over Nickel  
 Shell: 50u" Nickel  
 Operating Temp: -40C to +85C

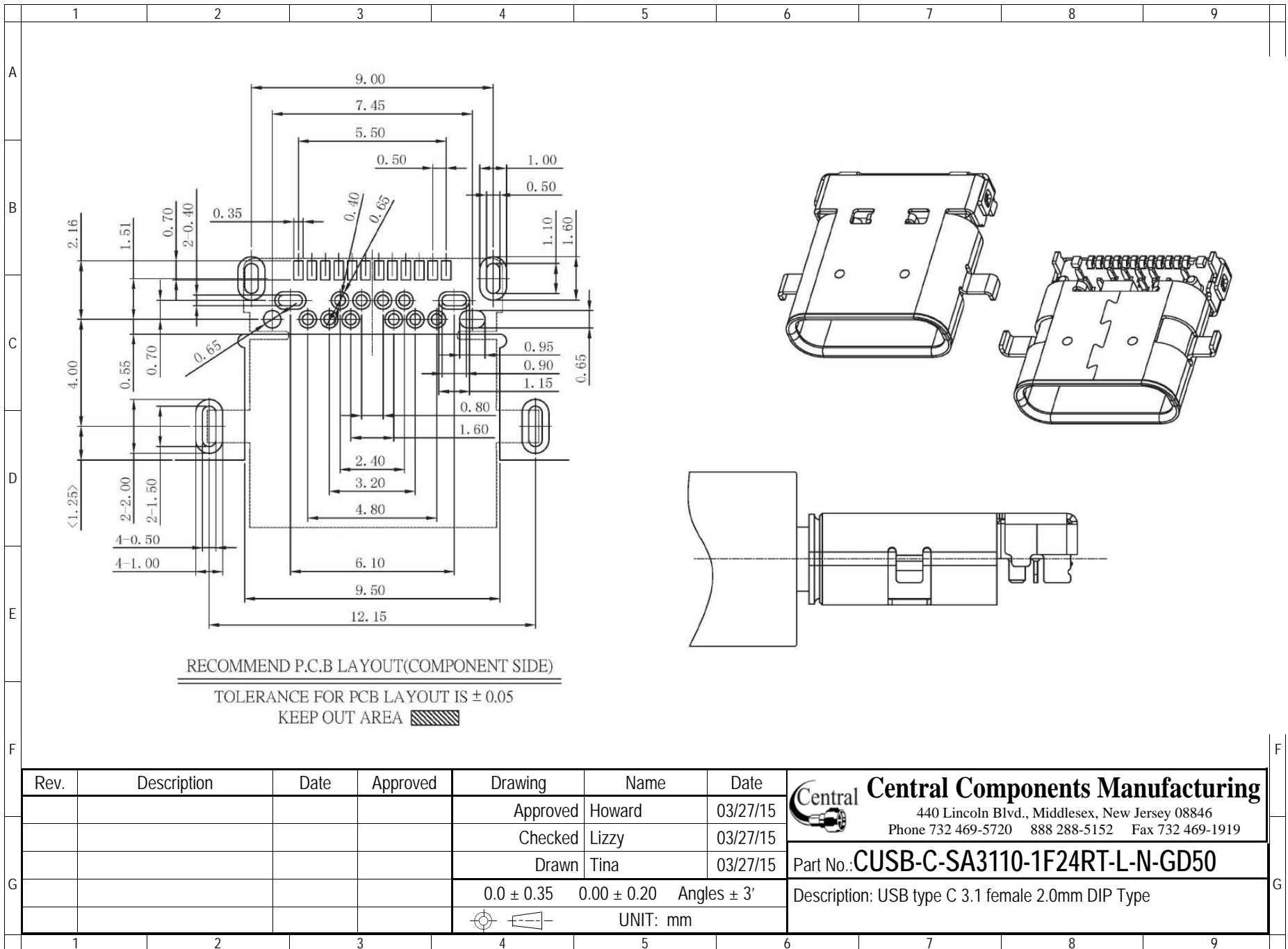
Series	Type	Style	Ports/Gender/Cont/Mount	Housing Material	Shell Plating	Contact Plating
CUSB	C	SA3110	1F24RT	L	N	GD50
USB Connector	Type C 3.1	See Drawing	2.0mm DIP Type Female	LCP	Nickel	50μ gold

Rev.	Description	Date	Approved	Drawing	Name	Date
				Approved	Howard	03/27/15
				Checked	Lizzy	03/27/15
				Drawn	Tina	03/27/15
				0.0 ± 0.35	0.00 ± 0.20	Angles ± 3'
				 UNIT: mm		

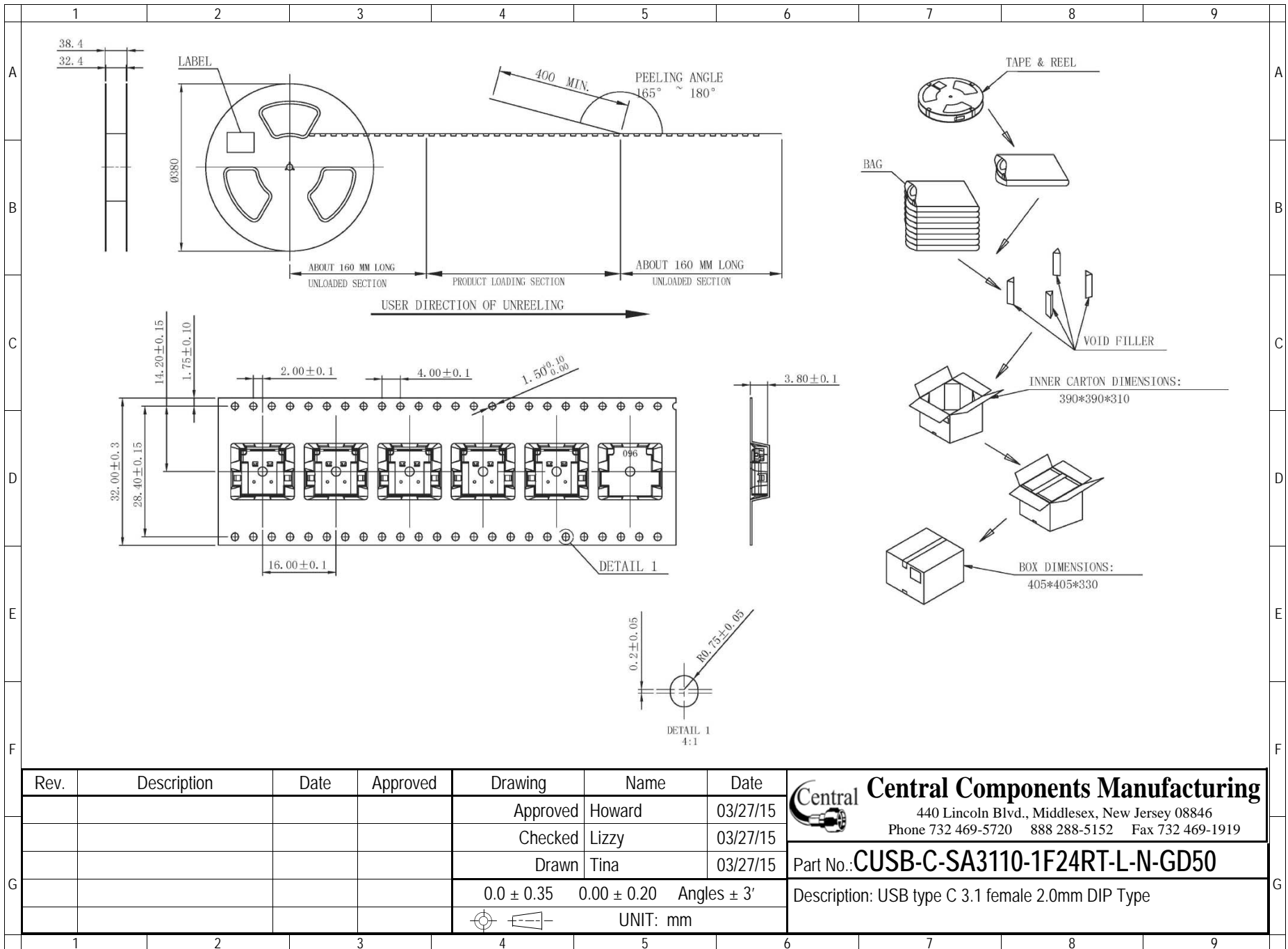
**Central Components Manufacturing**  
 440 Lincoln Blvd., Middlesex, New Jersey 08846  
 Phone 732 469-5720 888 288-5152 Fax 732 469-1919

Part No.: **CUSB-C-SA3110-1F24RT-L-N-GD50**

Description: USB type C 3.1 female 2.0mm DIP Type



Rev.	Description	Date	Approved	Drawing	Name	Date
				Approved	Howard	03/27/15
				Checked	Lizzy	03/27/15
				Drawn	Tina	03/27/15
				0.0 ± 0.35	0.00 ± 0.20	Angles ± 3'
					UNIT: mm	
						<b>Central Components Manufacturing</b> 440 Lincoln Blvd., Middlesex, New Jersey 08846 Phone 732 469-5720 888 288-5152 Fax 732 469-1919
						Part No.: <b>CUSB-C-SA3110-1F24RT-L-N-GD50</b>
						Description: USB type C 3.1 female 2.0mm DIP Type



Rev.	Description	Date	Approved	Drawing	Name	Date
				Approved	Howard	03/27/15
				Checked	Lizzy	03/27/15
				Drawn	Tina	03/27/15
				0.0 ± 0.35	0.00 ± 0.20	Angles ± 3'
						UNIT: mm

**Central Components Manufacturing**  
 440 Lincoln Blvd., Middlesex, New Jersey 08846  
 Phone 732 469-5720 888 288-5152 Fax 732 469-1919

Part No.: **CUSB-C-SA3110-1F24RT-L-N-GD50**

Description: USB type C 3.1 female 2.0mm DIP Type

G

G