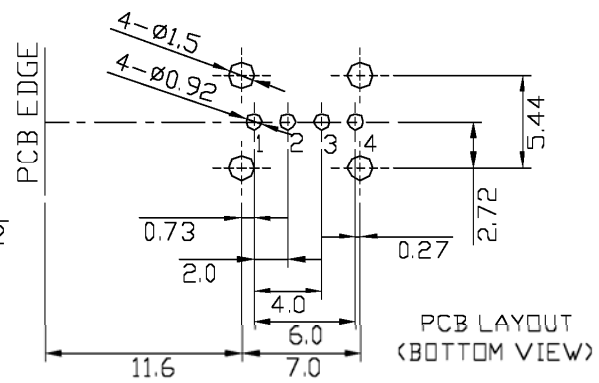


**SPECIFICATIONS**

Voltage Rating: 1.5A at 250VAC  
 Contact Resistance: 30m Ohm Max.  
 Insulation Resistance: 1000M Ohm Min @ 500VDC  
 Durability: 1500 Cycles  
 Insertion Force: 35 N Max.  
 Extraction Force: 10 N Min.  
 Withstanding: 500V AC



| Item | Name         | Material             | Finish            |
|------|--------------|----------------------|-------------------|
| 1    | Housing      | PBT G.F.             | White             |
| 2    | Terminal     | Phos. Bronze T: 0.25 | Gold / Tin Plated |
| 3    | Shell        | Brass T:0.3          | Nickel Plated     |
| 4    | Rear Shell   | SPCC T:0.3           | Nickel Plated     |
| 5    | Bottom Cover | PBT G.F.             | White             |

RoHS compliant

| Rev. | Description | Date | Approved | Drawing    | Name        | Date        |
|------|-------------|------|----------|------------|-------------|-------------|
|      |             |      |          | Approved   | Howard      | 07/16/10    |
|      |             |      |          | Checked    | Lizzy       | 07/16/10    |
|      |             |      |          | Drawn      | Tina        | 07/16/10    |
|      |             |      |          | 0.0 ± 0.35 | 0.00 ± 0.20 | Angles ± 3' |
|      |             |      |          | UNIT: mm   |             |             |

**Central Components Manufacturing**  
 440 Lincoln Blvd., Middlesex, New Jersey 08846  
 Phone 732 469-5720 888 288-5152 Fax 732 469-1919

Part No.: **CUSB-A-KS001VB-ANW20-L**

Description: USB A Type Upright 4 Pin DIP