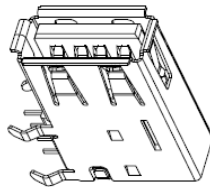
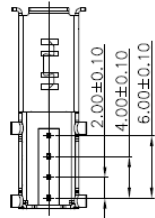
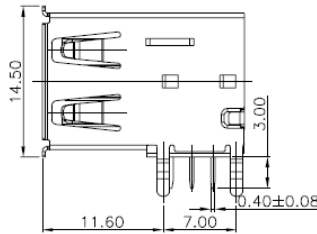
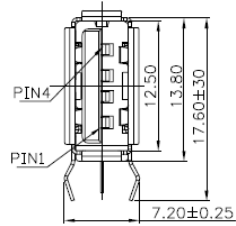


RECOMMENDED P.C.B LAYOUT



**SPECIFICATIONS**

- Current Rating: 1 Amp Max.
- Withstanding: 500V AC for one minute
- Contact Resistance: 30m ohms max
- Insulation Resistance: 1000M ohms min at DC 500V
- Housing: Thermoplastic UL94V-0
- Shell: Copper Alloy, Nickel Plating / Steel
- Terminal: Copper Alloy, Gold Plating on contact area  
Tin Plating on solder tail
- Operating Temp: -25C ~ +85C

Series	Type	Version	Positions	Shell	Plating	Color
CUSB	A	22AV	04F	X	SGXX	XX
USB Connector	A=Type A	Side Mount, Side Entry, Shielded	04F=4 Position Female	C=Copper alloy S=Steel	SG=Selective Gold XX=Flash if blank, 5,10,15,30u"	BK=Black (std) WT=White BE=Beige BL=Blue

RoHS compliant

Rev.	Description	Date	Approved	Drawing	Name	Date
				Approved	Howard	03/05/11
				Checked	Lizzy	03/05/11
				Drawn	Tina	03/05/11
				0.0 ± 0.35	0.00 ± 0.20	Angles ± 3°
				UNIT: mm		

**Central Components Manufacturing**  
 440 Lincoln Blvd., Middlesex, New Jersey 08846  
 Phone 732 469-5720 888 288-5152 Fax 732 469-1919

Part No.: **CUSB-A-22AU-04-X-SGXX-XX**

Description: USB A Type, PCB Mount, Upright, Metal Shield, Female

