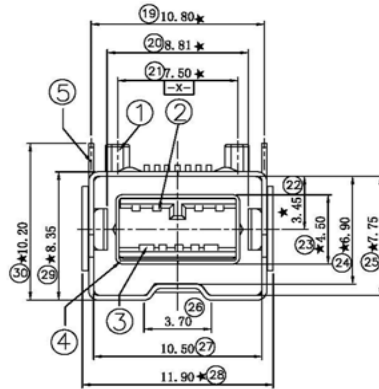


PCB LAYOUT



SPECIFICATIONS

Voltage: 5.0 V
 Current: 0.5A
 Contact Resistance: Terminal 50 milliohms max-shell & terminal
 Insulation Resistance: 100 Megohms min
 Withstanding: 100 V AC/1 min
 Temp Range: -40C ~ 105C

Item	Name	Material	Thickness
1	Housing	LCP	
2	Contact 1	Phosphor Bronze	0.2mm
3	Contact 2	Phosphor Bronze	0.2mm
4	Inner Shell	Brass	0.2mm
5	Shell	Brass	0.3mm

Series	Type	Style	Insulation Material	Insulation Color	Shell Plating	Contact Plating
CUSB	1394E5	9F	X	XX	XX	GDXX
USB/Firewire Connector	Firewire Side Entry Surface Mount	9 Pin Female	1:PBT 2:LCP 3:NL9T 4:NL6T 5:ABS	6:NL66 7:PPS 8:PVC 9:PE	BK=Black WT=White BG=Beige GY=Gray BL=Blue GN=Green RD=Red	GD=Gold NI=Nickel TN=Tin GD=Gold XX=1,3,5,10,15,30 u"

RoHS compliant

Rev.	Description	Date	Approved	Drawing	Name	Date
				Approved	Howard	03/02/12
				Checked	Lizzy	03/02/12
				Drawn	Tina	03/02/12
				0.0 ± 0.35	0.00 ± 0.20	Angles ± 3'
						UNIT: mm

Central Components Manufacturing
 440 Lincoln Blvd., Middlesex, New Jersey 08846
 Phone 732 469-5720 888 288-5152 Fax 732 469-1919

Part No.: **CUSB-1394E5-9F-X-XX-XX-XX**

Description: 1394 9 Pin Female Firewire Connector