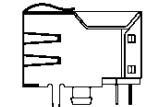
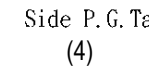
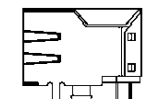
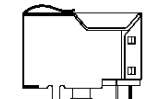
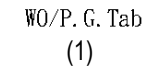
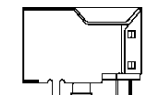
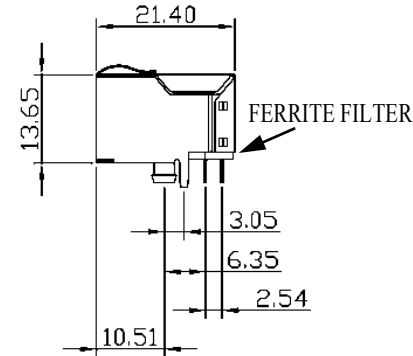
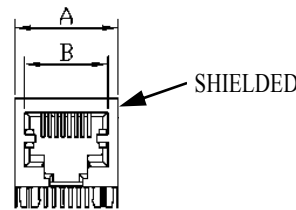
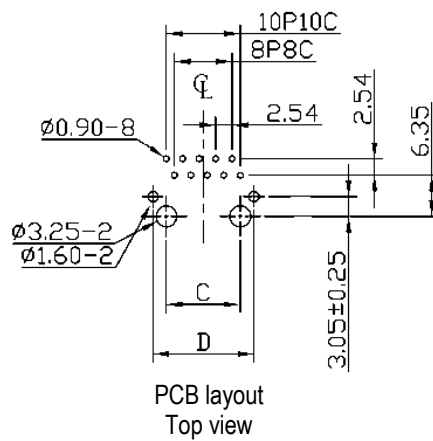


SPECIFICATIONS

Contact material: Phosphor bronze $\varnothing 0.45\text{mm}$ or 0.35mm thick
 Contact plating: Gold 15μ "
 Housing material: PBT with 15% glass fiber, UL94V-0
 Shield material: Copper alloy 0.25mm
 Shield plating: Nickel



Top & side panel grounding tabs (6)



Dimensions					
Pos.	Contacts	A	B	C	D
6	2, 4, 6	14.00	9.00	10.16	13.50
8	4, 6, 8	16.00	11.93	11.43	15.49
10	10	16.00	11.93	11.43	15.49

Series	Positions	Contacts	Body	Ground Tab	Color	Plating	Options	Panel Gnds.
CTJ	X	XX	H	D1	BK	PX	FS	PG6
Modular phone jack	6=6 positions 8=8 positions 10=10 positions	02=2 contacts 04=4 contacts 06=6 contacts 08=8 contacts 10=10 contacts	H=Side entry, tab down	D1=3.05mm ground tab offset	BK=Black	P1=15 μ " gold P2=30 μ " gold P3=50 μ " gold	FS=Full shield FF=Ferrite filter	[blank]=None 2=Top 4=Sides 6=Top & sides (See diagrams)

RoHS compliant

Rev.	Description	Date	Approved	Drawing	Name	Date
				Approved	Howard	08/10/99
				Checked	Lizzy	08/10/99
				Drawn	Tina	08/10/99
				0.0 ± 0.35	0.00 ± 0.20	Angles ± 3'
				UNIT: mm		

Central Components Manufacturing
 440 Lincoln Blvd., Middlesex, New Jersey 08846
 Phone 732 469-5720 888 288-5152 Fax 732 469-1919

Part No.: **CTJ-X-XX-H-D1-BK-PX-FS-PGX-FF**

Description: Modular jack, shielded, panel grounds, filter