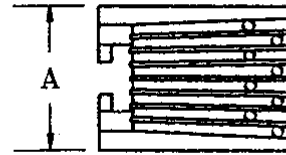
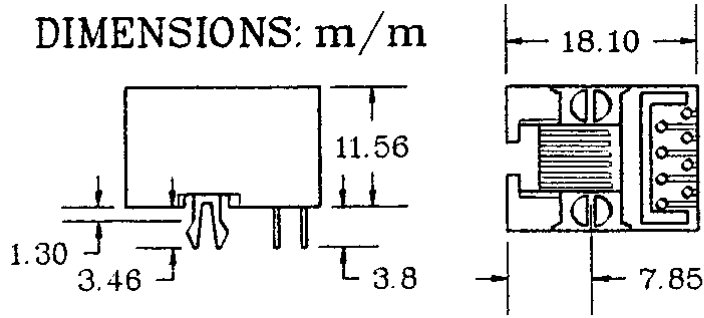
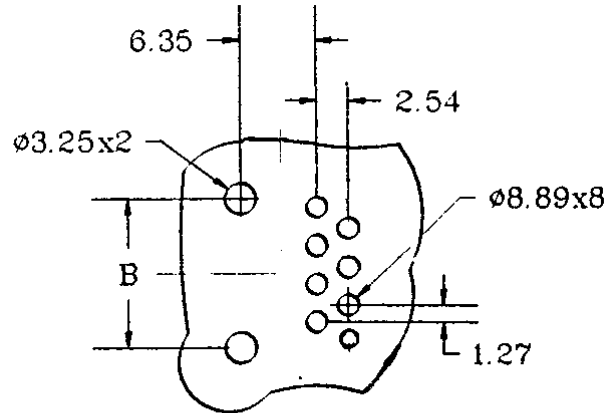


DIMENSIONS: m/m



SPECIFICATIONS

Contact material: Phosphor bronze alloy
 Contact plating: Gold
 Housing material: PBT with 15% glass fill, UL94V-0



LAYOUT/TOP VIEW

Dimensions			
Pos.	Contacts	A	B
4	4	11.18	7.62
6	2, 4, 6	13.20	10.16
8	6, 8	15.24	11.43



K: With keyway (8p only)

Series	Positions	Contacts	Style	Color	Plating
CTJ	X	XX	E	BK	PX
Modular phone jack	4, 6, 8	2, 4, 6, 8 (See table)	Side entry, low profile PCB mount	BK=Black	P1=15µ" gold P2=30µ" gold P3=50µ" gold

RoHS compliant

Rev.	Description	Date	Approved	Drawing	Name	Date
				Approved	Howard	08/10/99
				Checked	Lizzy	08/10/99
				Drawn	Tina	08/10/99
				0.0 ± 0.35	0.00 ± 0.20	Angles ± 3'
				UNIT: mm		

Central Components Manufacturing
 440 Lincoln Blvd., Middlesex, New Jersey 08846
 Phone 732 469-5720 888 288-5152 Fax 732 469-1919

Part No.: **CTJ-X-XX-E-BK-P1**

Description: Modular jack, side entry, low profile PCB mount