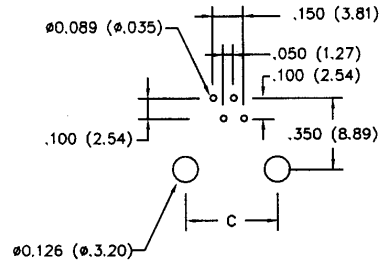
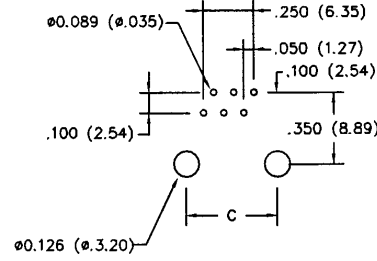


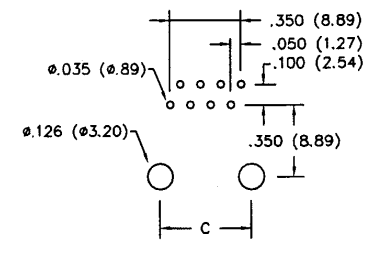
PC Layout (4 Position)



PC Layout (6 Position)

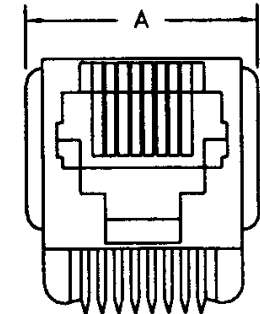
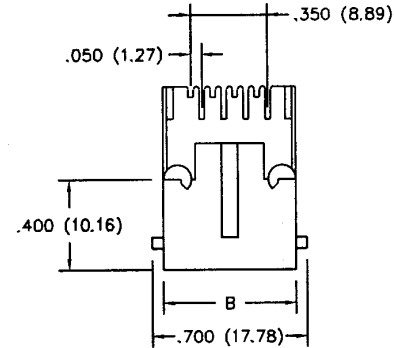
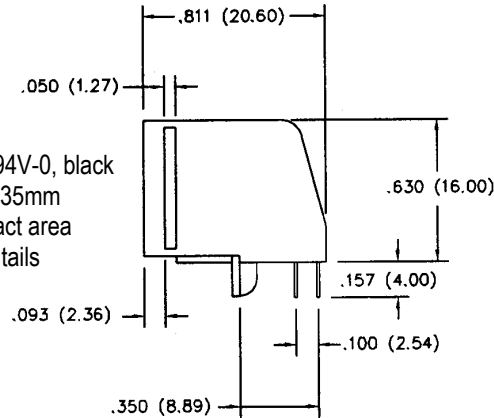


PC Layout (8 Position)



**SPECIFICATIONS**

Housing material: 15% glass filled PBT UL94V-0, black  
 Contact material: Phosphor bronze alloy 0.35mm  
 Contact plating: Gold over nickel on contact area  
 Tin over nickel on solder tails



Positions	Contacts	Dimensions inch (mm)		
		A	B	C
4	4	.540 (13.72)	.440 (11.48)	.300 (7.620)
6	2, 4, 6	.620 (15.75)	.520 (13.21)	.400 (10.16)
8	6, 8	.700 (17.78)	.600 (15.24)	.450 (11.43)

Series	Positions	Contacts	Style	Color	Plating
CTJ	X	XX	B	XX	PX
Modular phone jack	4, 6, 8	2, 4, 6, 8	Style B	BK=Black	P1=15µ" gold P2=30µ" gold P3=50µ" gold

RoHS compliant

Rev.	Description	Date	Approved	Drawing	Name	Date
				Approved	Howard	08/10/99
				Checked	Lizzy	08/10/99
				Drawn	Tina	08/10/99
				0.0 ± 0.35	0.00 ± 0.20	Angles ± 3'
				UNIT: mm		

**Central Components Manufacturing**  
 440 Lincoln Blvd., Middlesex, New Jersey 08846  
 Phone 732 469-5720 888 288-5152 Fax 732 469-1919

Part No.: **CTJ-X-XX-B-XX-PX**

Description: Modular telephone jack, type B