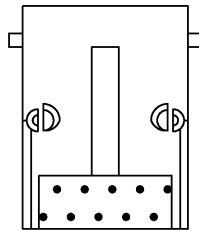
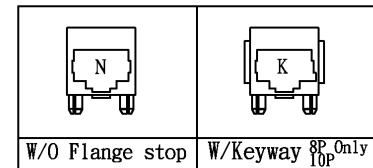


PC Board Layout (Top View)



Pos.	Cont.	A	B	C	D
4	4	13.70	11.20	7.70	7.62
6	2/4/6	15.75	13.20	9.90	10.16
8	8	17.70	15.20	11.95	11.43
10	10	17.70	15.20	11.95	11.43



SPECIFICATIONS

Contact material: Phosphor bronze 0.35mm
 Contact plating: Gold over nickel on contact area
 Tin over nickel on solder area
 Housing material: PBT polyester with mixed glass fiber, UL94V-0

Series	Positions	Contacts	Body Style	Color	Plating	Options
CTJ	X	XX	240	BK	PX	XX
Modular jack	4-10 (see chart)	2-10 (see chart)	240 style	BK=Black	P1=15µ" gold P2=30µ" gold P3=50µ" gold	WF=Without flange KY=With keyway (8P, 10P only)

RoHS compliant

Rev.	Description	Date	Approved	Drawing	Name	Date
				Approved	Howard	08/10/99
				Checked	Lizzy	08/10/99
				Drawn	Tina	08/10/99
		0.0 ± 0.35	0.00 ± 0.20	Angles ± 3'		
		UNIT: mm				

Central Components Manufacturing
 440 Lincoln Blvd., Middlesex, New Jersey 08846
 Phone 732 469-5720 888 288-5152 Fax 732 469-1919

Part No.: **CTJ-X-XX-240-PX-BK-XX**

Description: Modular jack, type 240, side entry thru-hole PCB mount