

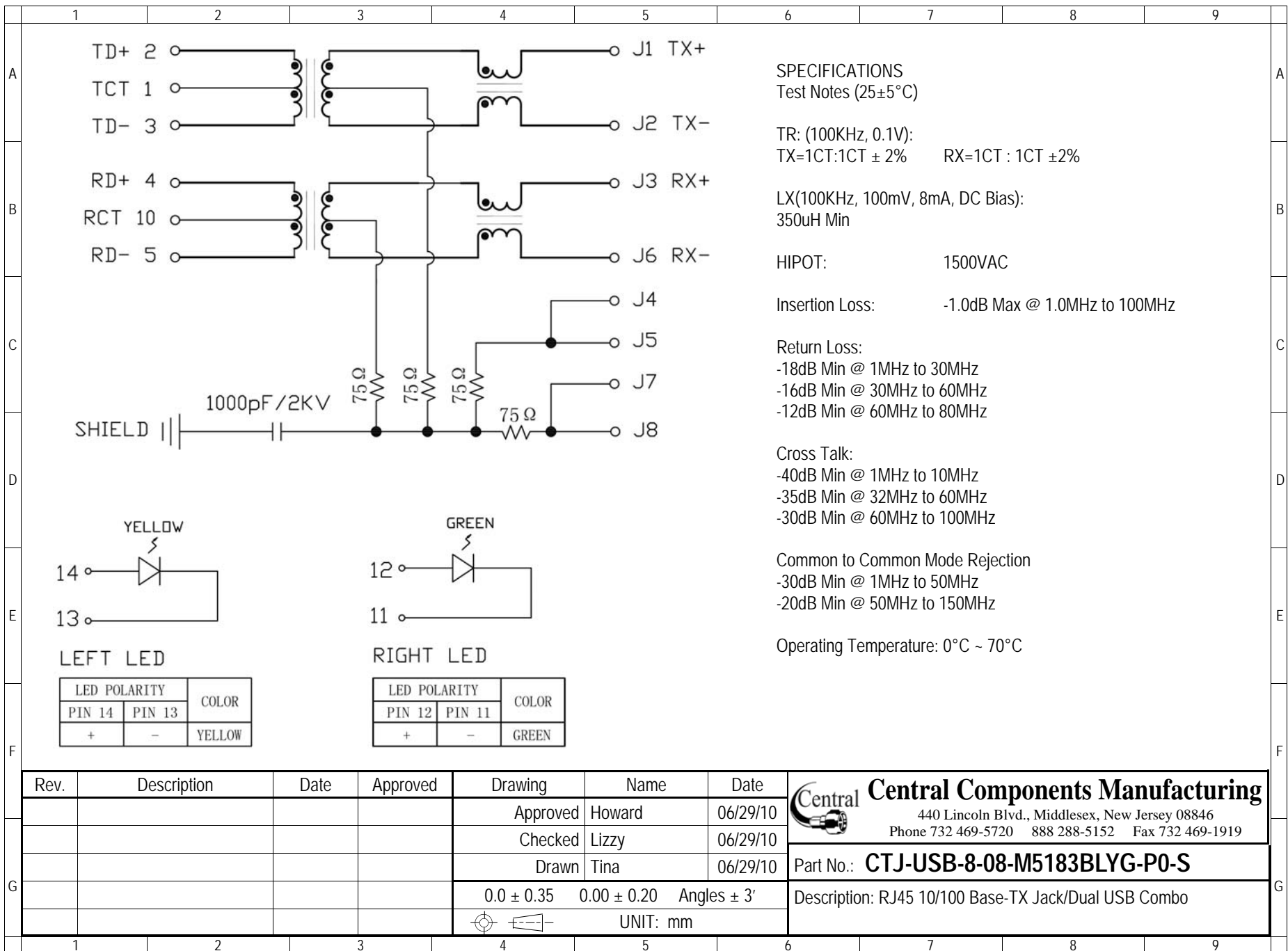
RoHS compliant

Rev.	Description	Date	Approved	Drawing	Name	Date
				Approved	Howard	06/29/10
				Checked	Lizzy	06/29/10
				Drawn	Tina	06/29/10
				0.0 ± 0.35	0.00 ± 0.20	Angles ± 3'
				UNIT: mm		

**Central Components Manufacturing**  
 440 Lincoln Blvd., Middlesex, New Jersey 08846  
 Phone 732 469-5720 888 288-5152 Fax 732 469-1919

Part No.: **CTJ-USB-8-08-M5183BLYG-P0-S**

Description: RJ45 10/100 Base-TX Jack/Dual USB Combo



**SPECIFICATIONS**  
Test Notes (25±5°C)

TR: (100KHz, 0.1V):  
TX=1CT:1CT ± 2%      RX=1CT : 1CT ±2%

LX(100KHz, 100mV, 8mA, DC Bias):  
350uH Min

HIPOT:                      1500VAC

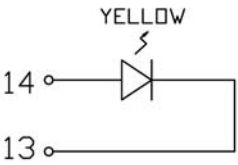
Insertion Loss:            -1.0dB Max @ 1.0MHz to 100MHz

Return Loss:  
-18dB Min @ 1MHz to 30MHz  
-16dB Min @ 30MHz to 60MHz  
-12dB Min @ 60MHz to 80MHz

Cross Talk:  
-40dB Min @ 1MHz to 10MHz  
-35dB Min @ 32MHz to 60MHz  
-30dB Min @ 60MHz to 100MHz

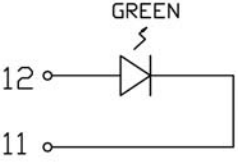
Common to Common Mode Rejection  
-30dB Min @ 1MHz to 50MHz  
-20dB Min @ 50MHz to 150MHz

Operating Temperature: 0°C - 70°C



LEFT LED

LED POLARITY		COLOR
PIN 14	PIN 13	
+	-	YELLOW



RIGHT LED

LED POLARITY		COLOR
PIN 12	PIN 11	
+	-	GREEN

Rev.	Description	Date	Approved	Drawing	Name	Date
				Approved	Howard	06/29/10
				Checked	Lizzy	06/29/10
				Drawn	Tina	06/29/10
				0.0 ± 0.35    0.00 ± 0.20    Angles ± 3'		
				UNIT: mm		

**Central Components Manufacturing**  
440 Lincoln Blvd., Middlesex, New Jersey 08846  
Phone 732 469-5720    888 288-5152    Fax 732 469-1919

Part No.: **CTJ-USB-8-08-M5183BLYG-P0-S**

Description: RJ45 10/100 Base-TX Jack/Dual USB Combo