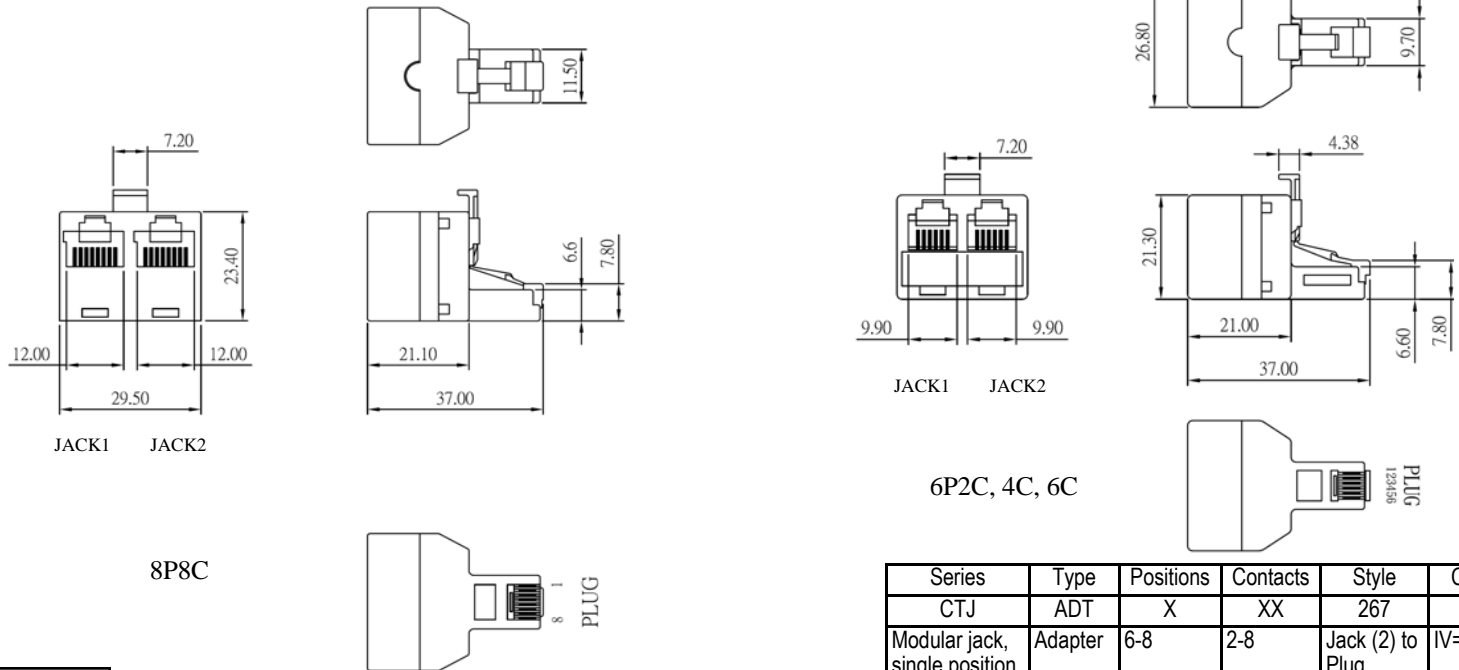


Color	Jack 1	Jack 2	Plug
Blue	1	1	1
Orange	2	2	2
Black	3	3	3
Red	4	4	4
Green	5	5	5
Yellow	6	6	6
Brown	7	7	7
White	8	8	8

SPECIFICATIONS

Housing: ABS 94V-2, Ivory
 Insert: ABS 94V-2, Ivory
 Contact: 0.46mm Diameter (C5191) Phos Bronze
 Contact Plating: Gold 6u" (std)
 Wire: UL-1061 AWM80°C VW-1 300V 26AWG
 Insulation Resistance: 10MΩ or more
 Withstanding Voltage: AC 500V 1 Minute
 Current Rating: 1.0A



RoHS compliant

Series	Type	Positions	Contacts	Style	Color	Plating
CTJ	ADT	X	XX	267	XX	PX
Modular jack, single position	Adapter	6-8	2-8	Jack (2) to Plug	IV=Ivory	P0=6μ" P1=15μ" P2=30μ" P3=50μ"

Rev.	Description	Date	Approved	Drawing	Name	Date
				Approved	Howard	10/15/15
				Checked	Lizzy	10/15/15
				Drawn	Tina	10/15/15
				0.0 ± 0.35	0.00 ± 0.20	Angles ± 3'
				UNIT: mm		

Central Components Manufacturing
 440 Lincoln Blvd., Middlesex, New Jersey 08846
 Phone 732 469-5720 888 288-5152 Fax 732 469-1919

Part No.: **CTJ-ADT-X-XX-267-IV-PX**

Description: Modular T Adapter

