

| Item | Name | Color | Spec | Notes |
|------|----------|-------|------|------------|
| 1 | Gasket | Red | EPDM | M3352R0100 |
| 2 | Body | Black | NY66 | M3352B0100 |
| 3 | Seal | Red | EPDM | M3352R0200 |
| 4 | Seal Nut | Black | PBT | M3352R0100 |

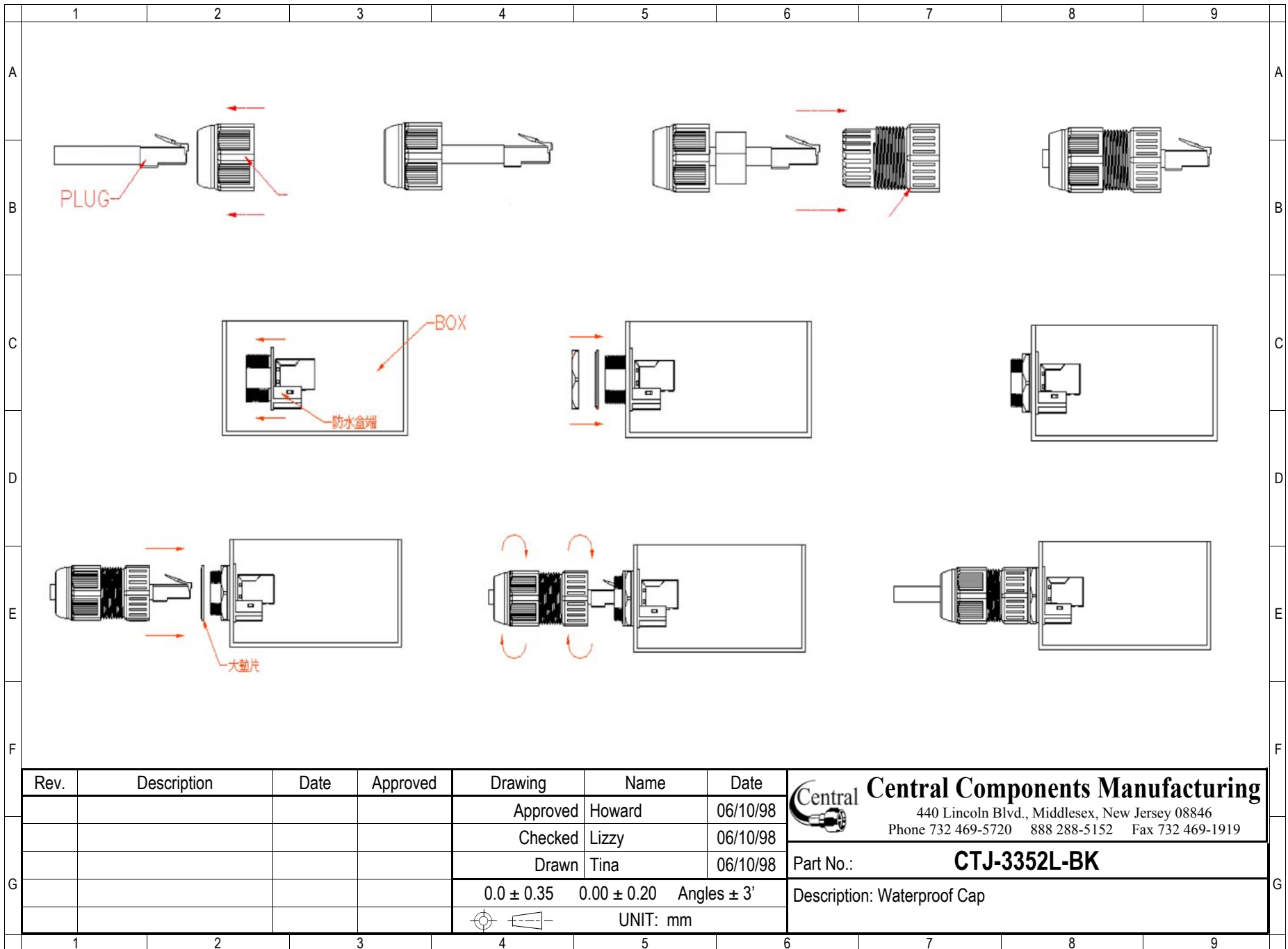
RoHS compliant

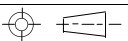
| Rev. | Description | Date | Approved | Drawing | Name | Date |
|------|-------------|------|----------|------------|-------------|-------------|
| | | | | Approved | Howard | 06/10/98 |
| | | | | Checked | Lizzy | 06/10/98 |
| | | | | Drawn | Tina | 06/10/98 |
| | | | | 0.0 ± 0.35 | 0.00 ± 0.20 | Angles ± 3' |
| | | | | | | UNIT: mm |


Central Components Manufacturing
 440 Lincoln Blvd., Middlesex, New Jersey 08846
 Phone 732 469-5720 888 288-5152 Fax 732 469-1919

Part No.: **CTJ-3352L-BK**

Description: Waterproof Cap



| Rev. | Description | Date | Approved | Drawing | Name | Date |
|------|-------------|------|----------|---|-------------|-------------|
| | | | | Approved | Howard | 06/10/98 |
| | | | | Checked | Lizzy | 06/10/98 |
| | | | | Drawn | Tina | 06/10/98 |
| | | | | 0.0 ± 0.35 | 0.00 ± 0.20 | Angles ± 3' |
| | | | |  | | UNIT: mm |


Central Components Manufacturing
 440 Lincoln Blvd., Middlesex, New Jersey 08846
 Phone 732 469-5720 888 288-5152 Fax 732 469-1919

Part No.: **CTJ-3352L-BK**

Description: Waterproof Cap