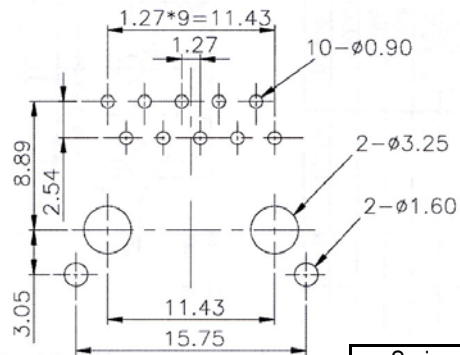
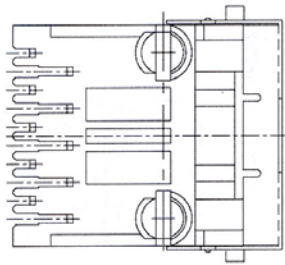


PCB LAYOUT/TOP VIEW



SPECIFICATIONS

Contact material: Phosphor bronze
 Contact plating: Gold over Nickel
 Tin over Nickel in Solder Area
 Shield material: Brass w/ Nickel Plating

Series	Positions	Contacts	Body Style	Color	Plating	Options
CTJ	X	XX	3019	BK	PX	XX
Modular jack, single port	6,8,10	02,04,06,08,10	3019 style	BK=Black	P1=15μ" gold P2=30μ" gold P3=50μ" gold	[blank]=None MS=Face shield KY=Keyed WF=No Flange

RoHS compliant

Rev.	Description	Date	Approved	Drawing	Name	Date
A	PNT	6/30/09	Greg	Approved	Howard	08/10/99
				Checked	Lizzy	08/10/99
				Drawn	Tina	08/10/99
				0.0 ± 0.35	0.00 ± 0.20	Angles ± 3'
				UNIT: mm		

Central Components Manufacturing
 440 Lincoln Blvd., Middlesex, New Jersey 08846
 Phone 732 469-5720 888 288-5152 Fax 732 469-1919

Part No.: **CTJ-10-10-3019-BK-PX-MS**

Description: Side Entry PCB Jack

Grid labels: 1-9 (horizontal), A-G (vertical)