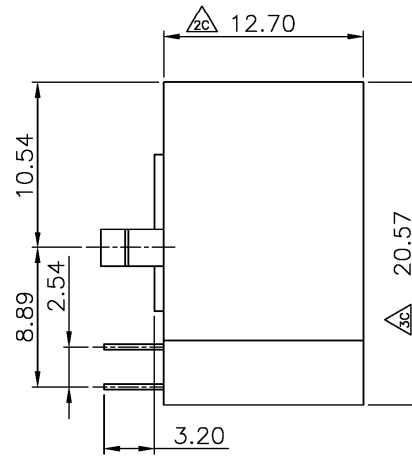
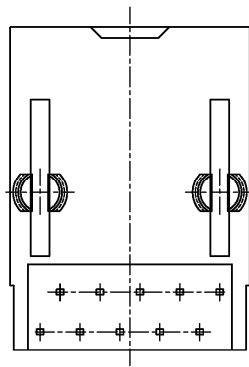
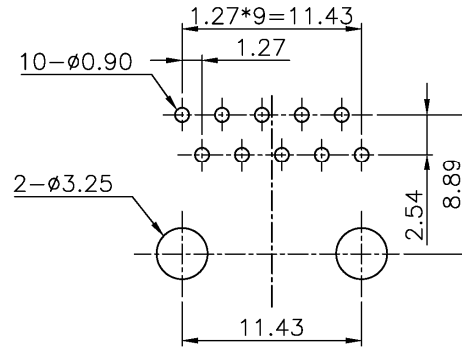


PCB LAYOUT/TOP VIEW



SPECIFICATIONS

Contact material: Phosphor bronze 0.35mm
 Contact plating: Gold over nickel in contact area
 Tin over nickel in solder area
 Housing material: Engineering thermoplastic, UL94V-0

RoHS compliant

Series	Positions	Contacts	Style	Color	Plating	Options	Panel Grounds
CTJ	X	XX	3012	BK	PX	XX	PGX
Modular jack, single position	8, 10	02, 04, 06, 08, 10	3012 style	BK=Black	P1=15µ" gold P2=30µ" gold P3=50µ" gold	[blank]=None FS=Full shield	[omitted]=None 2=Top

Rev.	Description	Date	Approved	Drawing	Name	Date
				Approved	Howard	08/10/99
				Checked	Lizzy	08/10/99
				Drawn	Tina	08/10/99
				0.0 ± 0.35	0.00 ± 0.20	Angles ± 3'
				UNIT: mm		

Central Components Manufacturing
 440 Lincoln Blvd., Middlesex, New Jersey 08846
 Phone 732 469-5720 888 288-5152 Fax 732 469-1919

Part No.: **CTJ-10-10-3012-BK-P1**

Description: Modular jack, type 3012, side entry, PCB thru-hole mount; available in multi-port