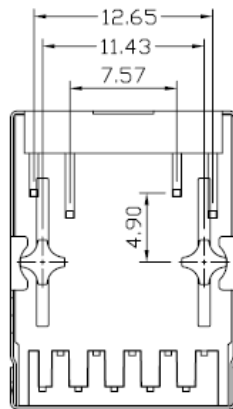


SUGGESTED PCB LAYOUT (TOP VIEW)

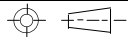


SPECIFICATIONS

- Designed to support applications such as SOHO (ADSL modems), Lan-on-Motherboard (LOM), hub and switches.
- Meets IEEE 802.3 specifications

Housing Material:	Thermoplastic UL94V-0
Contact / Shield:	Copper Alloy
Shield Plating:	Nickel
Contact Plating:	Gold
Processing Temperature:	265C for 5 sec. Max.
Operating Temperature:	-40C to +85C

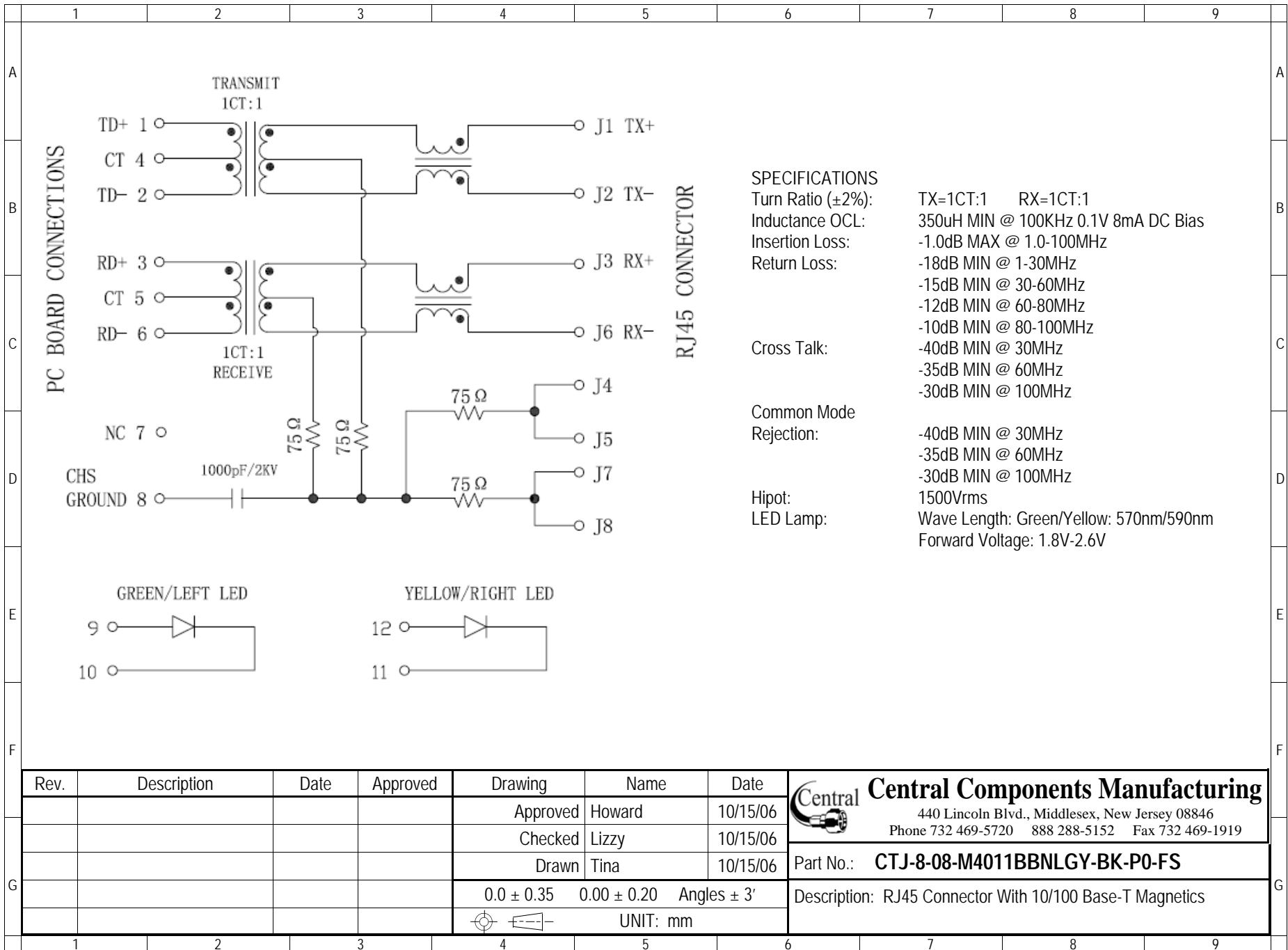
RoHS compliant

Rev.	Description	Date	Approved	Drawing	Name	Date
				Approved	Howard	10/15/06
				Checked	Lizzy	10/15/06
				Drawn	Tina	10/15/06
				0.0 ± 0.35	0.00 ± 0.20	Angles ± 3'
				 UNIT: mm		


Central Components Manufacturing
 440 Lincoln Blvd., Middlesex, New Jersey 08846
 Phone 732 469-5720 888 288-5152 Fax 732 469-1919

Part No.: **CTJ-8-08-M4011BBN LGY-BK-P0-FS**

Description: RJ45 Connector With 10/100 Base-T Magnetics



SPECIFICATIONS

Turn Ratio (±2%):	TX=1CT:1	RX=1CT:1
Inductance OCL:	350uH MIN @ 100KHz 0.1V 8mA DC Bias	
Insertion Loss:	-1.0dB MAX @ 1.0-100MHz	
Return Loss:	-18dB MIN @ 1-30MHz	
	-15dB MIN @ 30-60MHz	
	-12dB MIN @ 60-80MHz	
	-10dB MIN @ 80-100MHz	
Cross Talk:	-40dB MIN @ 30MHz	
	-35dB MIN @ 60MHz	
	-30dB MIN @ 100MHz	
Common Mode Rejection:	-40dB MIN @ 30MHz	
	-35dB MIN @ 60MHz	
	-30dB MIN @ 100MHz	
Hipot:	1500Vrms	
LED Lamp:	Wave Length: Green/Yellow: 570nm/590nm	
	Forward Voltage: 1.8V-2.6V	

Rev.	Description	Date	Approved	Drawing	Name	Date
				Approved	Howard	10/15/06
				Checked	Lizzy	10/15/06
				Drawn	Tina	10/15/06
				0.0 ± 0.35	0.00 ± 0.20	Angles ± 3'
					UNIT: mm	

Central Components Manufacturing
 440 Lincoln Blvd., Middlesex, New Jersey 08846
 Phone 732 469-5720 888 288-5152 Fax 732 469-1919

Part No.: **CTJ-8-08-M4011BBN LGY-BK-P0-FS**

Description: RJ45 Connector With 10/100 Base-T Magnetics